

THE RQYS YACHT RACING COURSE BOOK

THE RQYS YACHT RACING COURSE BOOK 2024/25

FOR RQYS YACHT AND CATAMARAN BAY RACING



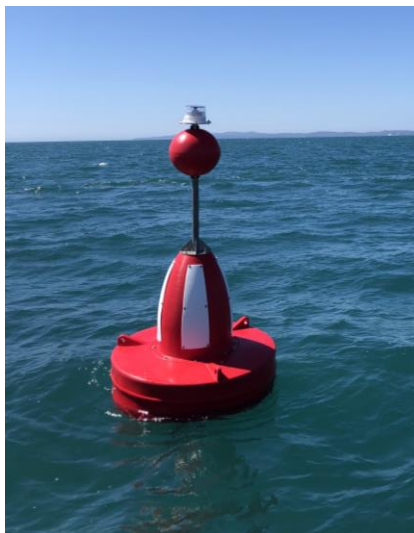
Administered by the Royal Queensland Yacht Squadron (RQYS)
578 Royal Esplanade, MANLY, Queensland 4179
(07) 3396 8666 | sailing@rqys.com.au

DESIGNATED MARKS USED FOR RACING

| | Description | Approximate Position | |
|------|---|-----------------------------|-----------|
| | Start/Finish – Inside Waterloo Bay East of the Manly Boat Harbour Leads | | |
| CJP | Crawford James Pattison Beacon (Nth Cardinal) | 27°24.9S | 153°13.6E |
| CY | Yellow Buoy SE of Cleveland Point | 27°30.9S | 153°18.2E |
| DL | Douglas Light | 27°29.5S | 153°22.8E |
| EE | Eric Early Beacon | 27°37.4S | 153°24.2E |
| EPB | Empire Point Beacon | 27°29.2S | 153°16.6E |
| GIB | Goat Island Beacon FI Yellow 2s | 27°31.1S | 153°23.1E |
| GIR | Red Beacon NE of Green Island | 27°24.8S | 153°14.6E |
| HBG | Green Beacon (FI G 2.5s) W Horseshoe Bay | 27°31.3S | 153°21.2E |
| HBY | FI Y 4s Eastern End Horseshoe Bay | 27°30.3S | 153°22.4E |
| HL | Hanlon Light | 27°28.2S | 153°21.0E |
| HYR | Huybers Beacon | 27°26.9S | 153°14.7E |
| JRB | Jeay's Reef Buoy - North Cardinal Beacon | 27°18.8S | 153°14.9E |
| LLS | Lockyer Light South Cardinal Beacon | 27°26.4S | 153°14.5E |
| LM1 | Bay Laid Mark, located on a bearing from the Start Boat and a nominated distance OR at a GPS position Communicated by the RC from the Start Boat. | | |
| MBG | Green Beacon off Maroom Bank | 27°27.03S | 153°19.5E |
| MHB | Merv Hazell Beacon | 27°33.6S | 153°24.1E |
| MIE | East Cardinal Beacon off Mud Island | 27°20.2S | 153°16.7E |
| MIGW | Mud Island Green | 27°20.5S | 153°13.6E |
| MISG | Mud Island Southern Green | 27°21.4S | 153°15.4E |
| MIWG | 2 x West Cardinal Beacons off Mud Island | 27°19.9S | 153°14.0E |
| ML | Myora Light | 27°28.4S | 153°24.3E |
| NJW | Norman J Wright Beacon (West Cardinal) | 27°25.1S | 153°13.2E |
| NRB | Green Beacon (FI G 4s) Naval Reserve Banks | 27°27.6S | 153°20.5E |
| OMM | Outer Measured Mile | 27°15.0S | 153°15.1E |
| PIG | Green Beacon West of Peel Island | 27°30.26S | 153°19.4E |
| PPG | Green Beacon (FI G 2.5s) North of Potts Point | 27°34.3S | 153°21.8E |
| SAY | Sand Hills Yellow | 27°16.86S | 153°22.9E |
| SHN | North Cardinal Beacon St Helena Island | 27°22.2S | 153°14.2E |
| SHR | Red Buoy East of St Helena Island | 27°23.2S | 153°15.2E |
| SHS | South Cardinal Beacon St Helena Island | 27°24.4S | 153°14.4E |
| SWR | Green Beacon (QG) S-W Rocks | 27°31.3S | 153°20.6E |
| TBR | Thorpe Beacon NW of King Island | 27°27.1S | 153°13.7E |

DESIGNATED FIXED MARKS USED FOR RACING

*As of the 2023/24 Season MSQ has laid 4 fixed marks referred to as “Rec Marks”
The “Rec Marks” are floating (Red & White) Safe Water Marks.*



| Description | | Approximate Position | |
|-------------|----------------------------|----------------------|-----------|
| SHRM | Sand Hills Rec Mark | 27°22.6S | 153°18.1E |
| GERM | Green Island East Rec Mark | 27°25.6S | 153°15.5E |
| HBRM | Hope Banks Rec Mark | 27°25.8S | 153°17.8E |
| PRM | Peel NW Rec Mark | 27°27.9S | 153°18.4E |

THE RQYS YACHT RACING COURSE BOOK

| Course Number | Course Marks (Rounding Side) |
|---------------|---|
| 1A | Start – LLS (P) - HBRM (P) – SHR (P) – HBRM (P) – SHR (P) – SHS (S) – CJP (P) - NJW (P) - Finish |
| 1B | Start – LLS (P) - HBRM (P) – SHR (P) – SHS (S) – CJP (P) - NJW (P) - Finish |
| 1C | Start – LLS (P) - HBRM (P) – GIR (P) – CJP (P) - NJW (P) - Finish |
| 2A | Start - LLS (P) – HBRM (P) – GERM (P) – HBRM (P) – SHR (P) - SHS (S) – CJP (P) – NJW (P) - Finish |
| 2B | Start - LLS (P) – HBRM (P) – GERM (P) – HBRM (P) – GIR (P) – CJP (P) – NJW (P) - Finish |
| 2C | Start - LLS (P) – HBRM (P) – GIR (P) – CJP (P) – NJW (P) - Finish |
| 3A | Start - LLS (P) – HBRM (S) – CY (P) – HBRM (P) – LLS (S) – Finish |
| 3B | Start – HYR (S) – CY (P) – HYR (P) – Finish |
| 3C | Start – HYR (S) – PRM (S) – HYR (P) – Finish |
| 4A | Start - LLS (P) – MBG (S) – LLS (S) – Finish |
| 4B | Start - LLS (P) – HBRM (S) – LLS (S) – Finish |
| 5A | Start - HYR (S) – EP (P) – HBRM (P) – EP (P) – HBRM (P) – LLS (S) - Finish |
| 5B | Start - HYR (S) – EP (P) – HBRM (P) – LLS (S) - Finish |
| 5C | Start - HYR (S) – EP (P) – HYR (P) - Finish |
| 6A | Start - NJW (S) – CJP (S) – SHS (P)/GIR (S) – LM1 (P) – SHS (S)/GIR (P) – CJP (P) – NJW (P) – Finish |
| 6B | Start - NJW (S) – CJP (S) – SHS (P)/GIR (S) – LM2 (P) – SHS (S)/GIR (P) – CJP (P) – NJW (P) – Finish |
| 6C | Start - NJW (S) – CJP (S) – SHS (P)/GIR (S) – LM3 (P) – SHS (S)/GIR (P) – CJP (P) – NJW (P) – Finish |
| 7A | Start - HYR (S) – PIG (S) – CY (S) – HYR (P) – Finish |
| 7B | Start - HYR (S) – PIG (S) – HYR (P) – Finish |
| 7C | Start - HYR (S) – EP (P) – HYR (P) – Finish |
| 8 | Reserved for Future Use |
| 9 | Reserved for Future Use |
| 10 | Reserved for Future Use |
| 11A | Start - NJW (S) – CJP (S) – GIR (S) – HBRM (S) – HL (S) – HBY (P) – HBG (S) – SWR (S) – HYR (P) – Finish |
| 11B | Start - NJW (S) – CJP (S) – GIR (S) – HBRM (S) – MBG (S) – PRM (S) – HYR (P) – Finish |
| 11C | Start - NJW (S) – CJP (S) – GIR (S) – HBRM (S) – MBG (S) – LLS (S) – Finish |
| 12A | Start - HYR (S) – HL (S) – HBY (P) – HBG (S) – SWR (S) – HYR (P) – Finish |
| 12B | Start - HYR (S) – MBG (S) – EP (S) – HYR (P) – Finish |
| 12C | Start - HYR (S) – MBG (S) – HYR (P) – Finish |
| 13A | Start - HYR (S) – PIG* (S) – SHR (S) – HBRM (S) – GIR (P) – CJP (P) – NJW (P) – Finish |
| 13B | Start - HYR (S) – PIG* (S) – GIR (P) – CJP (P) – NJW (P) – Finish *When reversed PIG shall remain to Starboard |
| 13C | Start - HYR (S) – EP (P) – GERM (P) – GIR (P) – CJP (P) – NJW (P) – Finish |
| 14A | Start - LLS (P) – HBRM (P) – MIE (P) – CY (P) – HBRM (P) – LLS (S) – Finish |
| 14B | Start - LLS (P) – HBRM (P) – MIE (P) – EP (P) – HBRM (P) – LLS (S) – Finish |
| 14C | Start - LLS (P) – HBRM (P) – MIE (P) – GERM (S) – LLS (S) – Finish |
| 15A | Start – NJW (S) – CJP (S) – GIR (S) – HBRM (P) – MIWG (S) – JRB (S) – MIE (S) – HBRM (S) – LLS (S) – Finish |
| 15B | Start – NJW (S) – CJP (S) – GIR (S) – HBRM (P) – MISG (P) – GERM (S) – LLS (S) – Finish |
| 15C | Start – NJW (S) – CJP (S) – GIR (S) – HBRM (P) – SHR (P) – GERM (S) – LLS (S) – Finish |
| 16A | Start - NJW (S) – CJP (S) – SHS (P) – SAY (P) – MIE (P) – HBRM (S) – LLS (S) – Finish |
| 16B | Start – NJW (S) – CJP (S) – SHS (P) – SHRM (P) – SHR (P) – HBRM (S) – LLS (S) – Finish |
| 17A | Start - NJW (S) – CJP (S) – SHS (P) – SAY (P) – SHS (S) – CJP (P) – NJW (P) – Finish |
| 17B | Start – NJW (S) – CJP (S) – SHS(P) – SHRM (P) – SHR (S) – SHS (S) – CJP (P) – NJW (P) – Finish |
| 17C | Start – NJW (S) – CJP (S) – SHS(P) – SHRM (P) – SHS (S) – CJP (P) – NJW (P) – Finish |
| 18A | Start – NJW (S) – CJP (S) – SHS (P) – SHR (S) – GERM (S) – LLS (S) – Finish |
| 18B | Start – NJW (S) – CJP (S) – GIR (S) – HBRM (S) – LLS (S) - Finish |
| 18C | Start – NJW (S) – CJP (S) – GIR (S) – GERM (S) – LLS (S) - Finish |
| 19A | Start – NJW (S) – CJP (S) – SHS (P) – SHR (P) – MIWG (S) – JRB (S) – MIE (S) – SHR (S) – SHS (S) – CJP (P) – NJW (P) – Finish |
| 19B | Start – NJW (S) – CJP (S) – SHS (P) – SHR (P) – MISG (S) – SHR (S) – SHS (S) – CJP (P) – NJW (P) – Finish |
| 20A | Start – LLS (P) – HBRM (S) – PRM (S) – HBRM (P) – LLS (S) – Finish |
| 20B | Start – LLS (P) – HBRM (S) – PRM (S) – HYR (P) – Finish |
| 20C | Start – LLS (P) – HBRM (S) – LLS (S) – Finish |
| 21A | Start – NJW (S) – CJP (S) – GIR (S) – HBRM (S) – GERM (S) – GIR (P) – CJP (P) – NJW (P) – Finish |
| 21B | Start – NJW (S) – CJP (S) – GIR (S) – HBRM (S) – GIR (P) – CJP (P) – NJW (P) – Finish |
| 22A | Start – NJW (S) – CJP (S) – GIR (S) – GERM (P) – GIR (P) – CJP (P) – NJW (P) – LLS (P) – GERM (P) – LLS (S) – Finish |
| 22B | Start – NJW (S) – CJP (S) – GIR (S) – GERM (P) – GIR (P) – CJP (P) – NJW (P) – LLS (P) – GERM (P) – LLS (S) – Finish |
| 23A | Start – NJW (S) – CJP (S) – SHS (P) – SHR (S) – HBRM (S) – GIR (P) – CJP (P) – NJW (P) – Finish |

THE RQYS YACHT RACING COURSE BOOK

| Course Number | Course Marks (Rounding Side) |
|---------------|---|
| 23B | Start – NJW (S) – CJP (S) – SHS (P) – SHR (S) – GERM (S) – GIR (P) – CJP (P) – NJW (P) – Finish |
| 23C | Start – NJW (S) – CJP (S) – SHS (P) – SHR (S) – SHS (S) – CJP (P) – NJW (P) - Finish |
| 24A | Start – LLS (P) – GERM (S) – PRM (S) – GERM (S) – PRM (S) – HYR (P) – Finish |
| 24B | Start – LLS (P) – GERM (S) – PRM (S) – HYR (P) – Finish |
| 24C | Start – LLS (P) – GERM (S) – HBRM (S) – LLS (S) – Finish |
| 25A | Start – LLS (P) – GERM (P) – SHR (S) – HBRM (S) – LLS (S) – Finish |
| 25B | Start – LLS (P) – GERM (P) – SHR (S) – GERM (S) – LLS (S) - Finish |
| 26B | Start – NJW (S) – CJP (S) – SHS (P) SHR (S) – HBRM (S) – LLS (S) - Finish |

Course Book Supplementary Sailing Instructions:

1 – The Use of an “X” Mark (a mark set at 90 degrees to the Start Line, usually upwind) is indicated by the flying of a Green or Red flag on the Start Boat, this flag indicates the rounding of the “X” Mark and shall be inserted in the Course Mark list in between the Start and the first mark of the course.

2 – All Starts are assumed to be inside Waterloo Bay. Where the RC wishes to run a Start East of Green Island the Race Committee may advance the course up to the point at which the Start Line leaves Waterloo Bay by flying an L flag and indicating the next mark on a board on the back of the boat. In this instance the RC need only signal the course and the next mark of the course, all previous marks are to be disregarded. [E.g. Course 11 would become Start – ~~NJW (S) – CJP (S) – GIR (S)~~ – HBRM (S) – HL (S) – HBY (P) – HBG (S) – SWR (S) – HYR (P) – Finish]

3 – Where Course Book SI's 1 and 2 are to operate together the Board need only indicate the next Fixed or Laid Mark, the X mark being indicated by the flying of Green or Red flags.

4 – Where the Race Committee wish to run these courses as a “Reverse” they shall indicated the course number followed by a prominent R and indicate as such on Radio. The course shall observe all marks in the opposite order and with the opposing rounding.

EXAMPLE Course 1: Start – NJW (S) – CJP (S) – SHS (P) – SHR (S) – HBRM (S) – SHR (S) – HBRM (S) – LLS (S) – Finish.

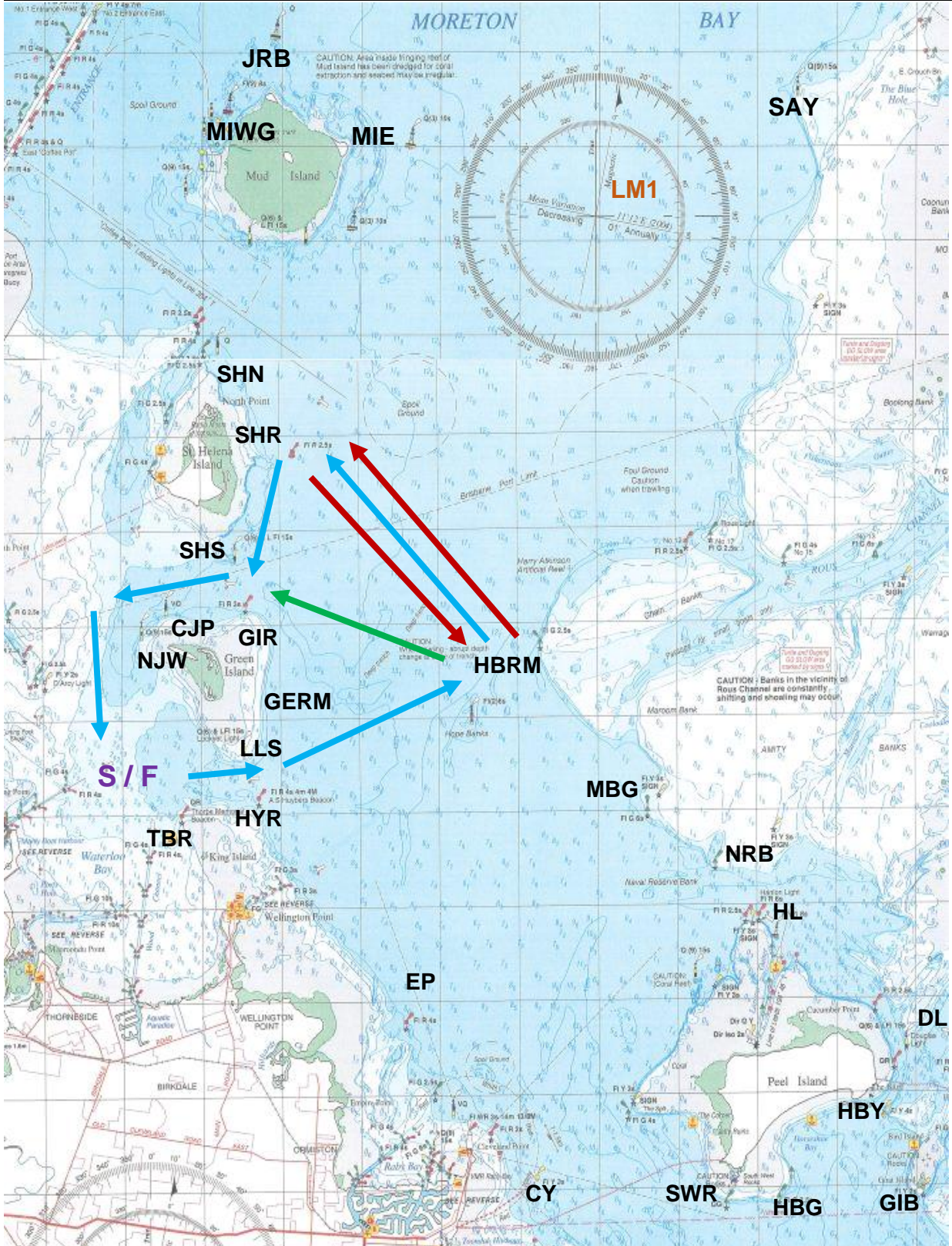
Course Variants (A, B and C):

Standard Course Variant Colors: **A Variant – RED** | **B Variant – BLUE** | **C Variant - GREEN**

Course arrows only display a different color when differentiating from course variant B (blue).

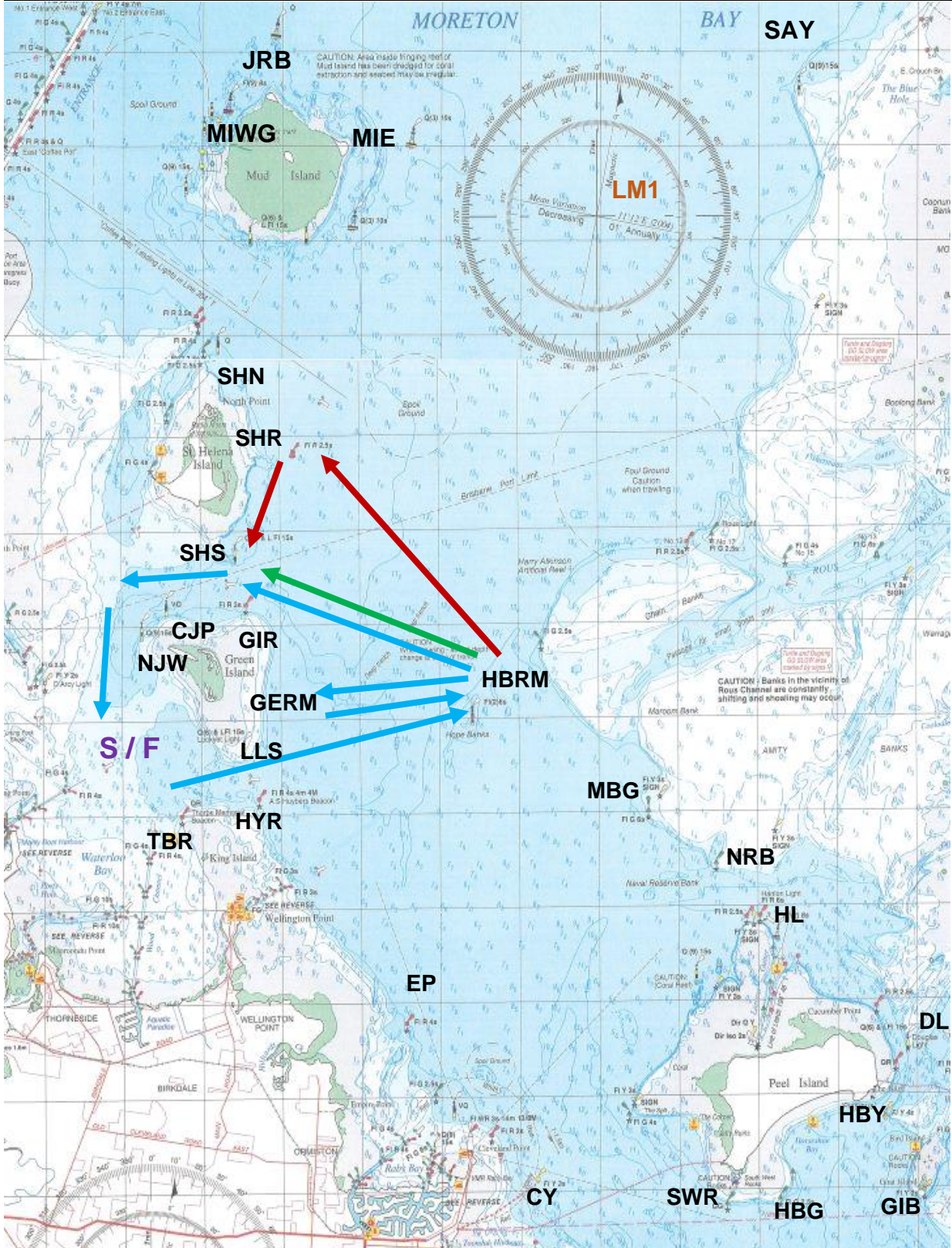
THE RQYS YACHT RACING COURSE BOOK

| | | |
|-----------|--|------|
| 1A | Start – LLS (P) - HBRM (P) – SHR (P) – HBRM (P) – SHR (P) – SHS (S) – CJP (P) - NJW (P) - Finish | 18.1 |
| 1B | Start – LLS (P) - HBRM (P) – SHR (P) – SHS (S) – CJP (P) - NJW (P) - Finish | 11.8 |
| 1C | Start – LLS (P) - HBRM (P) – GIR (P) – CJP (P) - NJW (P) - Finish | 9.7 |



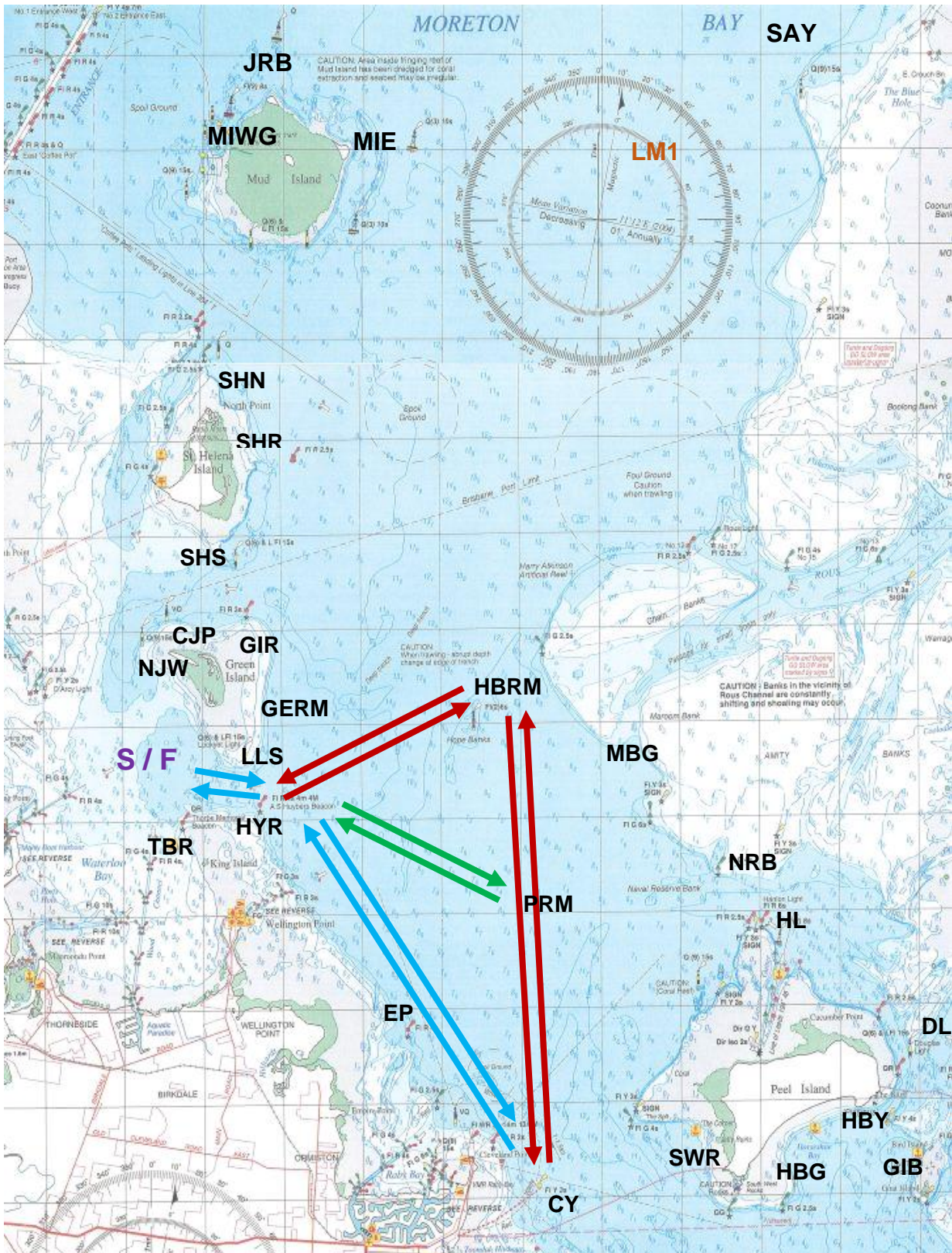
THE RQYS YACHT RACING COURSE BOOK

| | | |
|-----------|---|------|
| 2A | Start - LLS (P) – HBRM (P) – GERM (P) – HBRM (P) – SHR (P) - SHS (S) – CJP (P) – NJW (P) - Finish | 15.7 |
| 2B | Start - LLS (P) – HBRM (P) – GERM (P) – HBRM (P) – GIR (P) – CJP (P) – NJW (P) - Finish | 14 |
| 2C | Start - LLS (P) – HBRM (P) – GIR (P) – CJP (P) – NJW (P) - Finish | 9.7 |



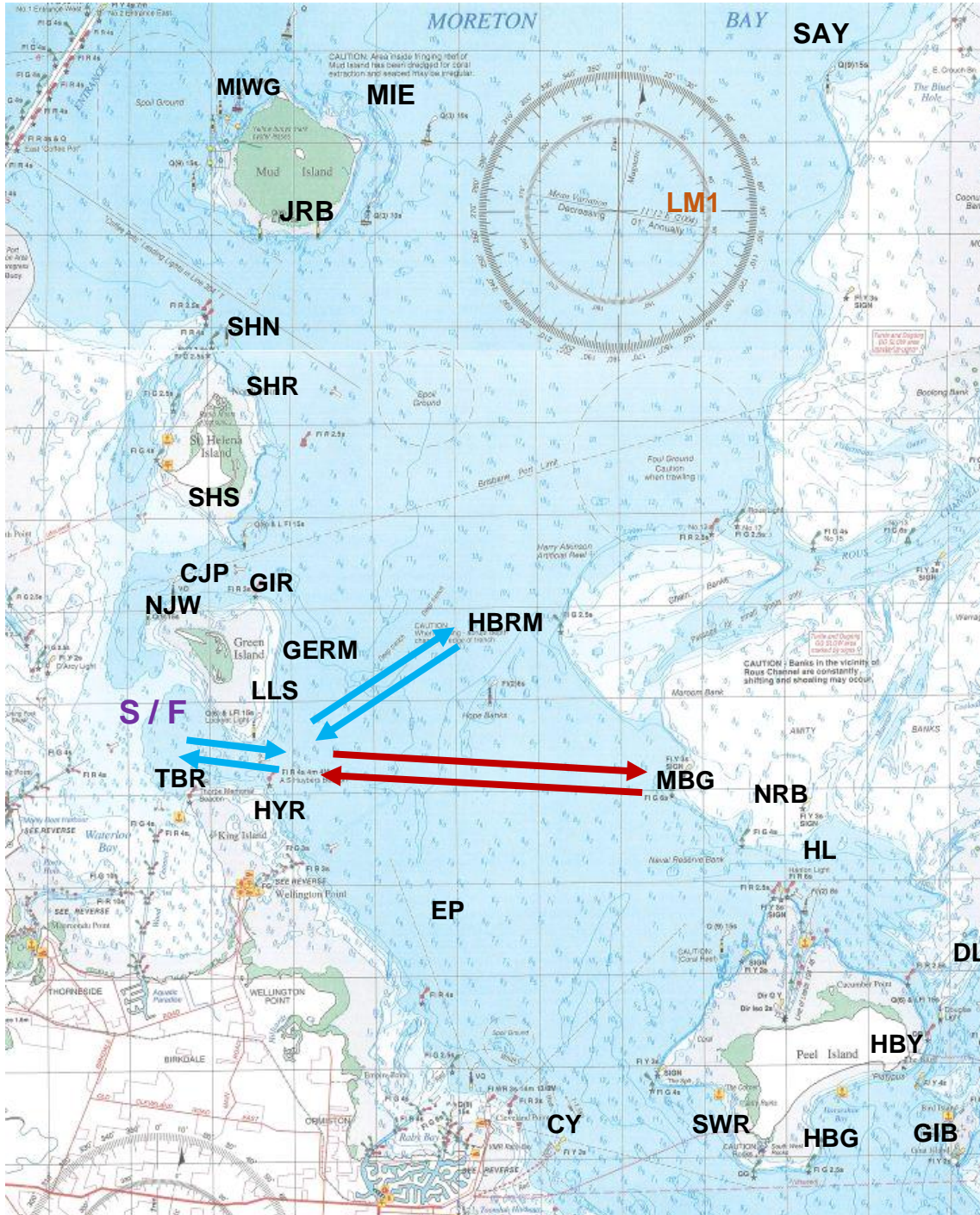
THE RQYS YACHT RACING COURSE BOOK

| | | |
|-----------|---|------|
| 3A | Start - LLS (P) – HBRM (S) – CY (P) – HBRM (P) – LLS (S) – Finish | 16.8 |
| 3B | Start - HYR (S) – CY (P) – HYR (P) – Finish | |
| 3C | Start - HYR (S) – PRM (S) – HYR (P) – Finish | |



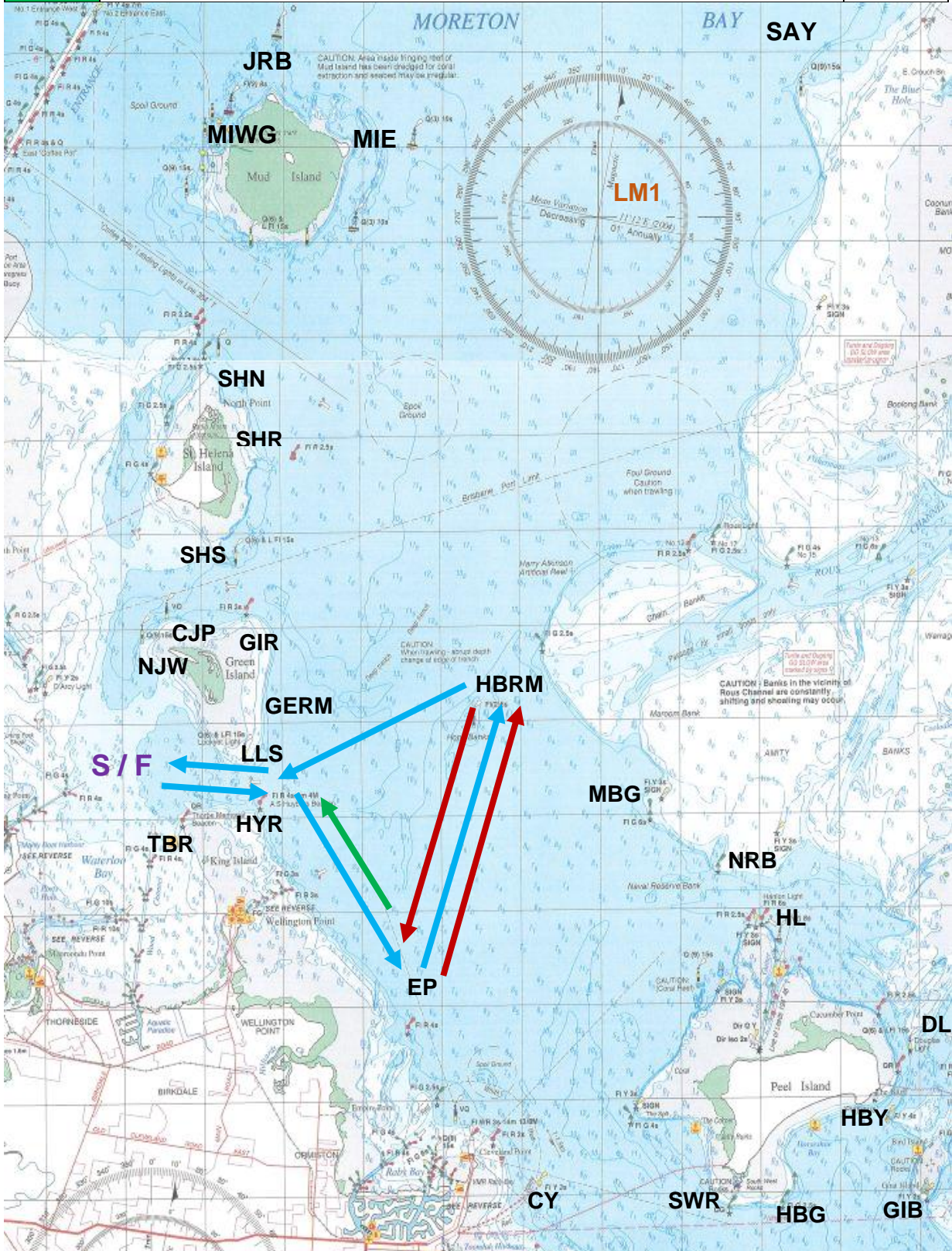
THE RQYS YACHT RACING COURSE BOOK

| | | |
|-----------|---|------|
| 4A | Start - LLS (P) – MBG (S) – LLS (S) – Finish | 11.6 |
| 4B | Start - LLS (P) – HBRM (S) – LLS (S) – Finish | 8 |



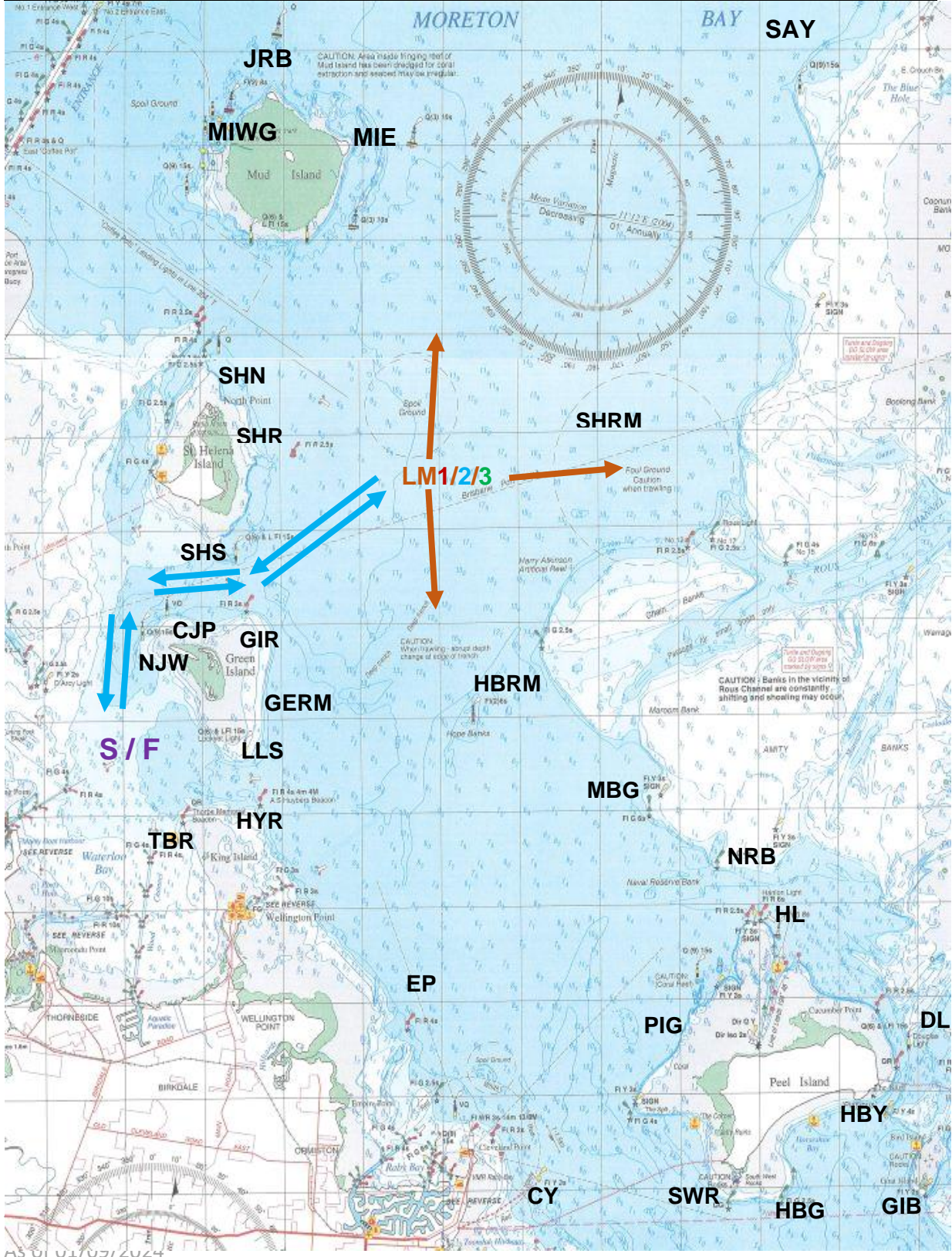
THE RQYS YACHT RACING COURSE BOOK

| | | |
|-----------|--|------|
| 5A | Start - HYR (S) – EP (P) – HBRM (P) – EP (P) – HBRM (P) – LLS (S) - Finish | 17.8 |
| 5B | Start - HYR (S) – EP (P) – HBRM (P) – LLS (S) - Finish | 11.9 |
| 5C | Start - HYR (S) – EP (P) – HYR (P) - Finish | 8.4 |



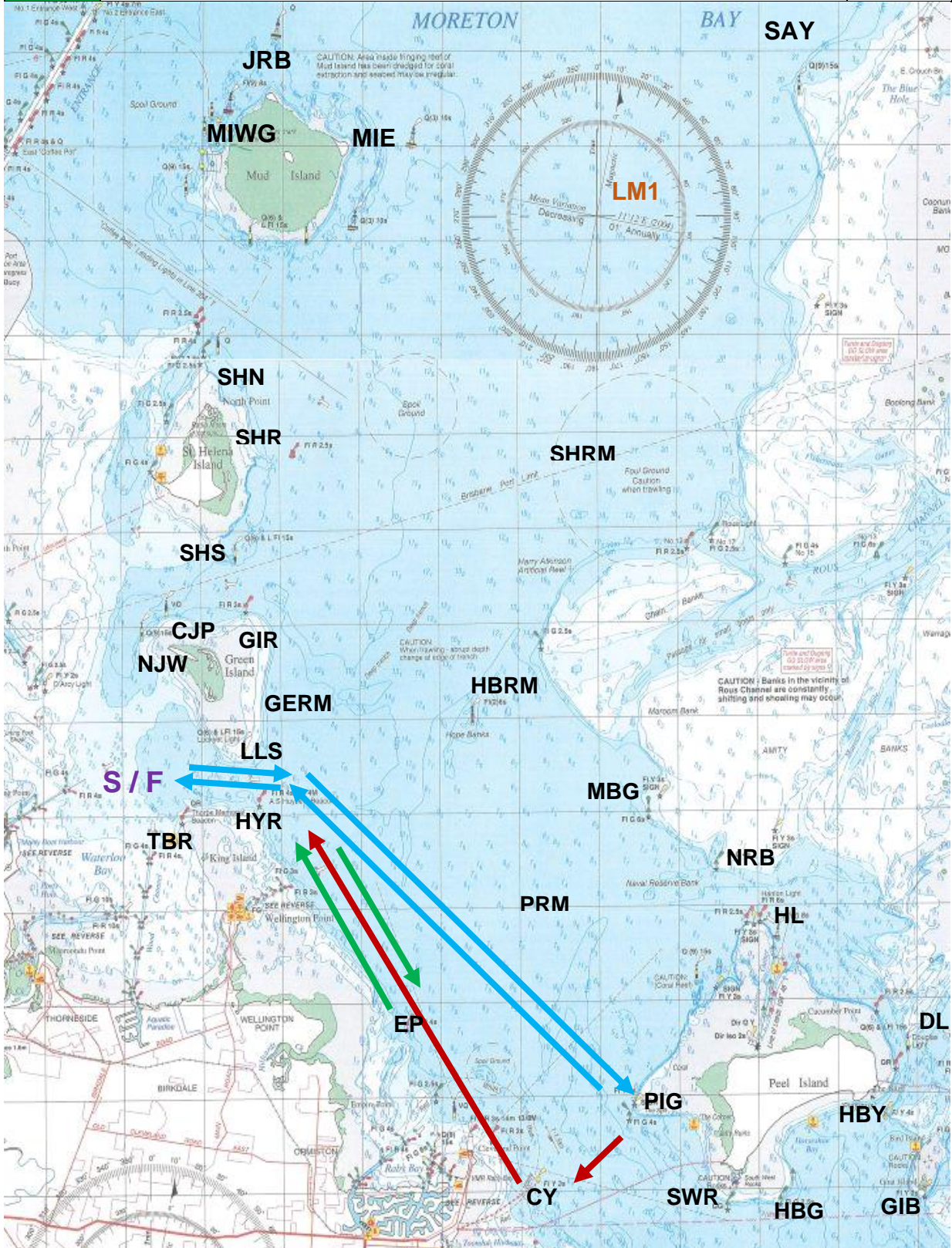
THE RQYS YACHT RACING COURSE BOOK

| | | |
|-----------|---|------|
| 6A | Start - NJW (S) – CJP (S) – SHS (P)/GIR (S) – LM1 (P) – SHS (S)/GIR (P) – CJP (P) – NJW (P) – Finish | 13.2 |
| 6B | Start - NJW (S) – CJP (S) – SHS (P)/GIR (S) – LM2 (P) – SHS (S)/GIR (P) – CJP (P) – NJW (P) – Finish | |
| 6C | Start - NJW (S) – CJP (S) – SHS (P)/GIR (S) – LM3 (P) – SHS (S)/GIR (P) – CJP (P) – NJW (P) – Finish | |



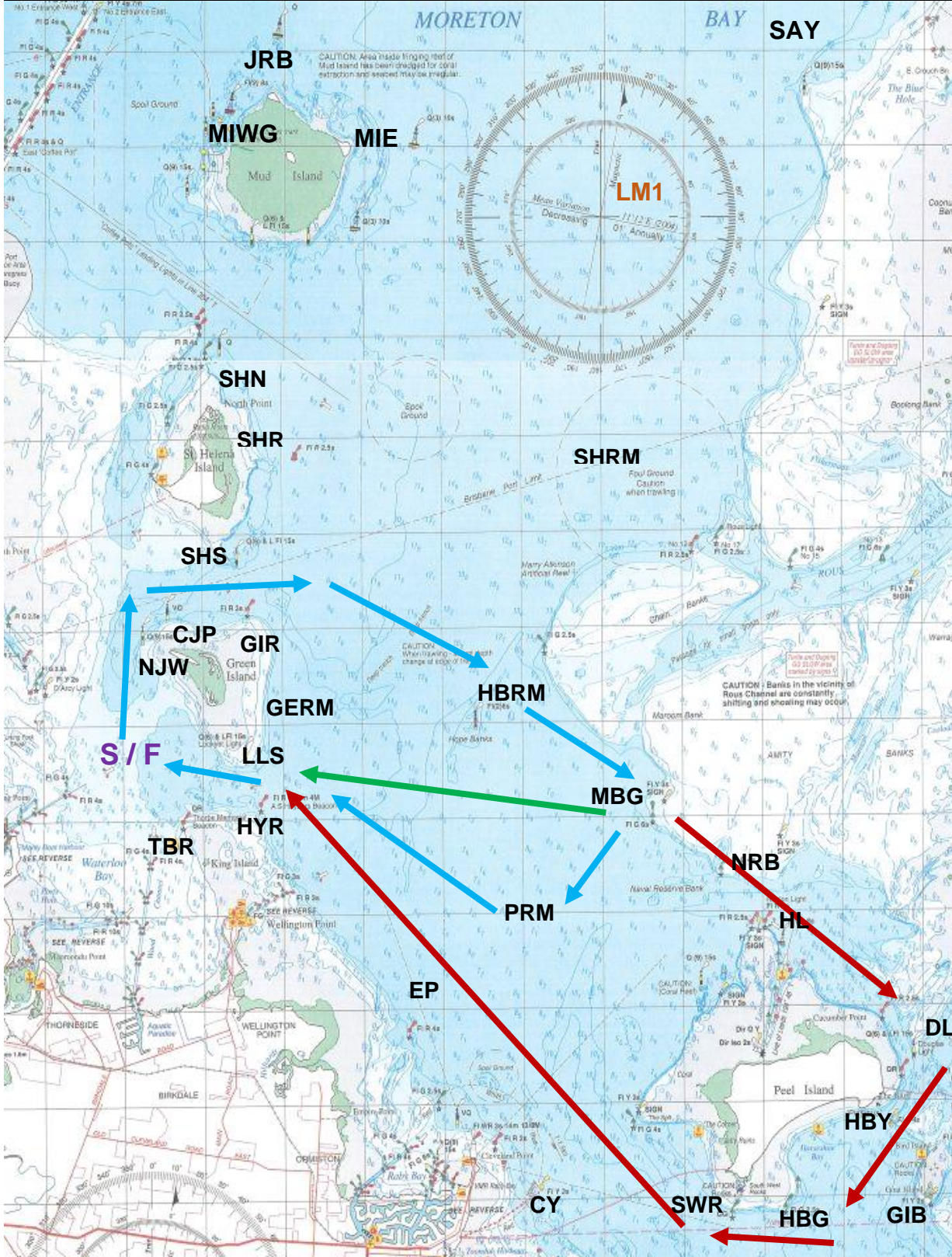
THE RQYS YACHT RACING COURSE BOOK

| | | |
|-----------|---|-----|
| 7A | Start - HYR (S) – PIG (S) – CY (S) – HYR (P) – Finish | 14 |
| 7B | Start - HYR (S) – PIG (S) – HYR (P) – Finish | 14 |
| 7C | Start - HYR (S) – EP (P) – HYR (P) – Finish | 8.4 |



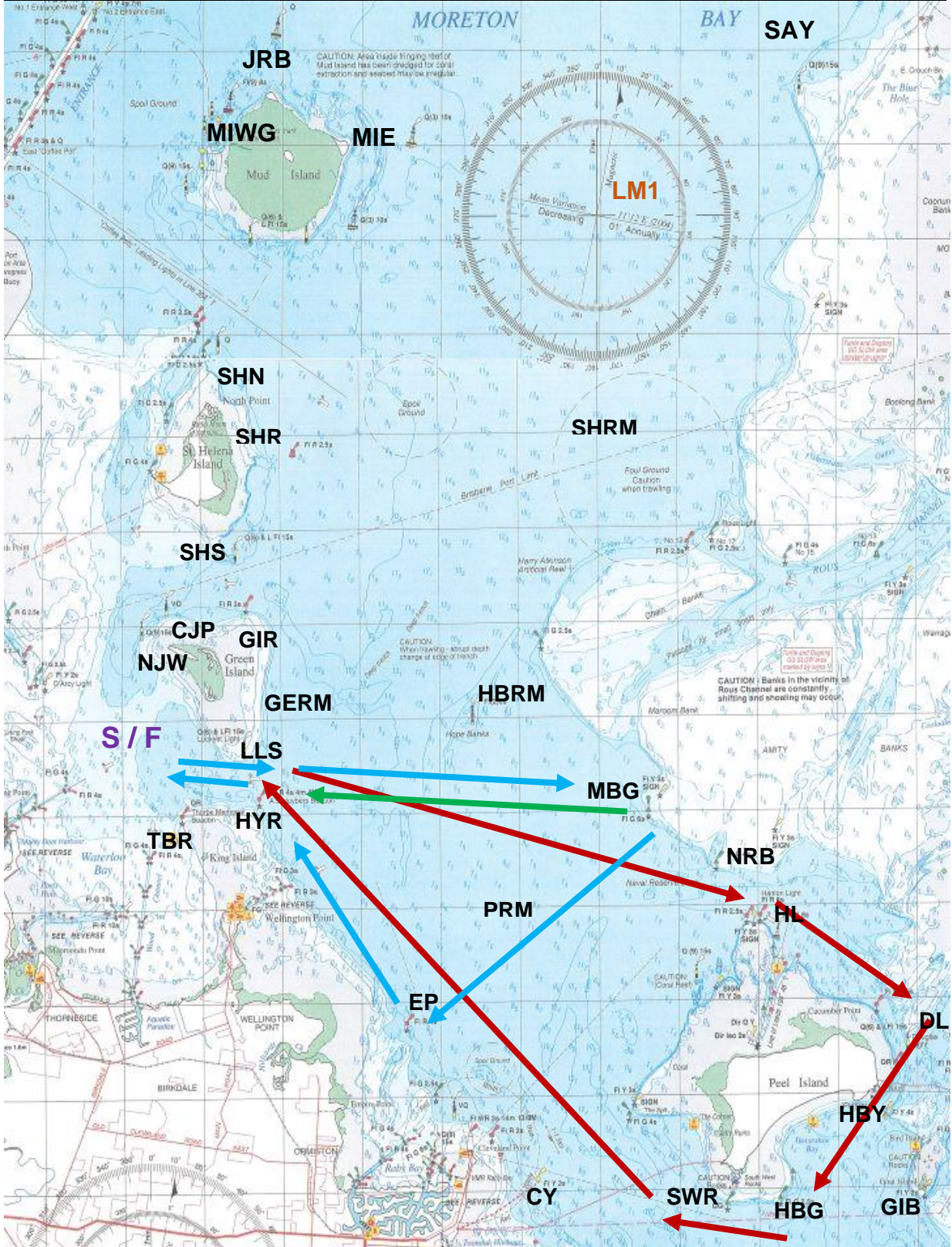
THE RQYS YACHT RACING COURSE BOOK

| | | |
|------------|--|------|
| 11A | Start - NJW (S) – CJP (S) – GIR (S) – HBRM (S) – HL (S) – HBY (P) – HBG (S) – SWR (S) – HYR (P) – Finish | 23.5 |
| 11B | Start - NJW (S) – CJP (S) – GIR (S) – HBRM (S) – MBG (S) – PRM (S) – HYR (P) – Finish | 13.9 |
| 11C | Start - NJW (S) – CJP (S) – GIR (S) – HBRM (S) – MBG (S) – LLS (S) – Finish | 12.1 |



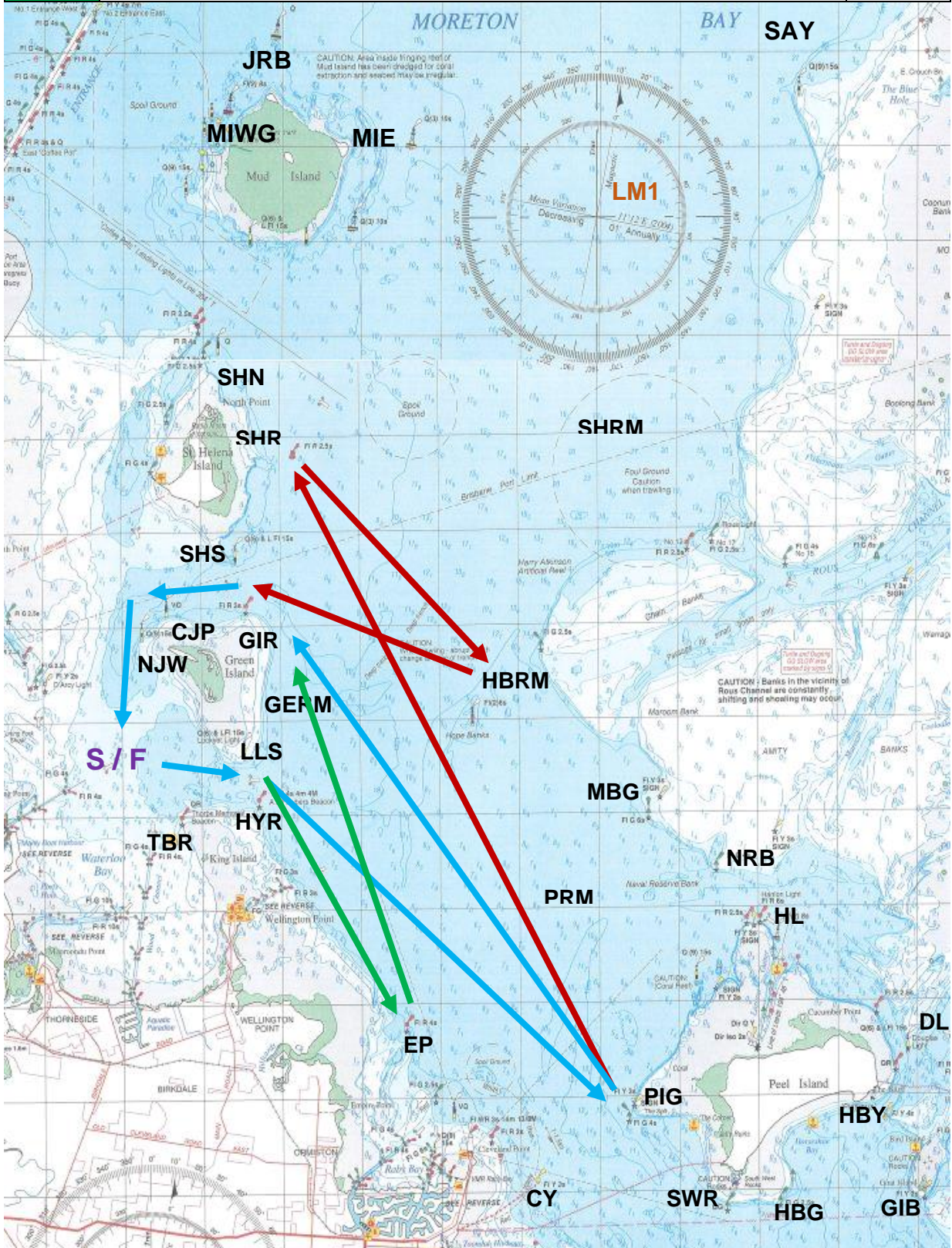
THE RQYS YACHT RACING COURSE BOOK

| | | |
|------------|---|------|
| 12A | Start - HYR (S) – HL (S) – HBY (P) – HBG (S) – SWR (S) – HYR (P) – Finish | 20.5 |
| 12B | Start - HYR (S) – MBG (S) – EP (S) – HYR (P) – Finish | 13.1 |
| 12C | Start - HYR (S) – MBG (S) – HYR (P) – Finish | 11.2 |



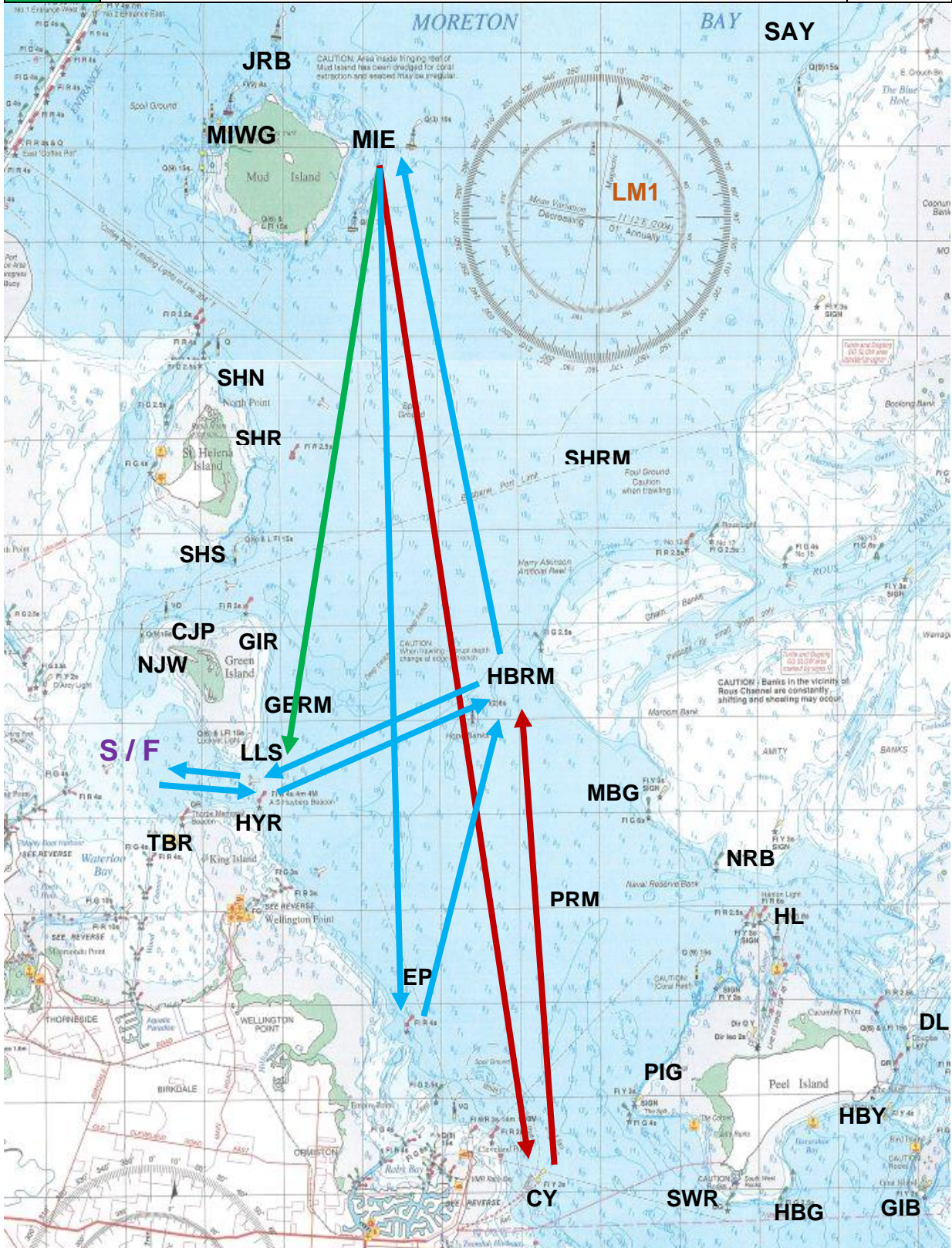
THE RQYS YACHT RACING COURSE BOOK

| | | |
|------------|---|------|
| 13A | Start - HYR (S) – PIG (S)* – SHR (S) – HBRM (S) – GIR (P) – CJP (P) – NJW (P) – Finish *When course 13 is reversed, the PIG rounding shall remain as a STARBOARD rounding. | 23.5 |
| 13B | Start - HYR (S) – PIG (S)* – GIR (P) – CJP (P) – NJW (P) – Finish *When course 13 is reversed, the PIG rounding shall remain as a STARBOARD rounding. | 16.2 |
| 13C | Start - HYR (S) – EP (P) – GERM (P) – GIR (P) – CJP (P) – NJW (P) – Finish | 12.1 |



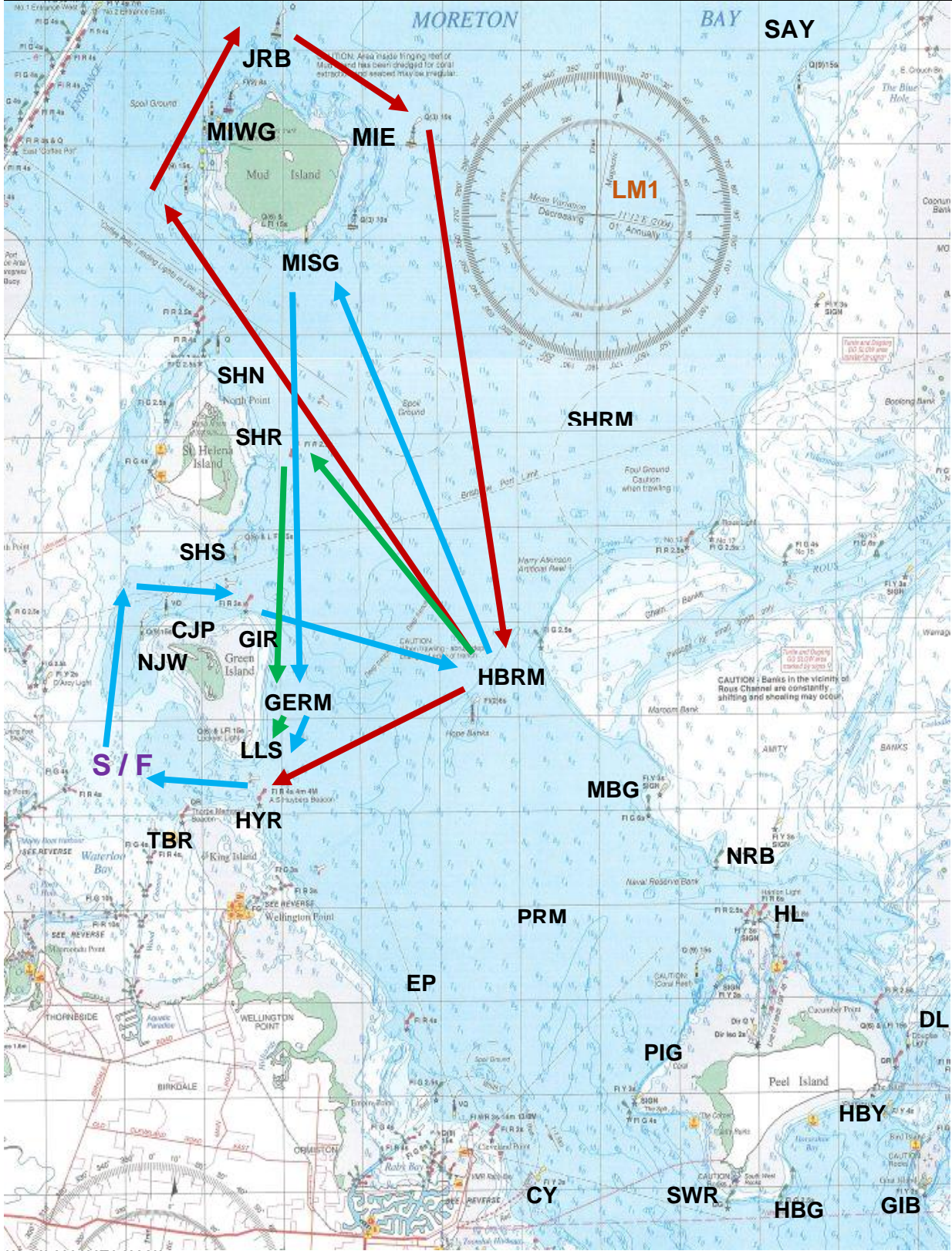
THE RQYS YACHT RACING COURSE BOOK

| | | |
|-----|---|------|
| 14A | Start - LLS (P) – HBRM (P) – MIE (P) – CY (P) – HBRM (P) – LLS (S) – Finish | 37.3 |
| 14B | Start - LLS (P) – HBRM (P) – MIE (P) – EP (P) – HBRM (P) – LLS (S) – Finish | 27.1 |
| 14C | Start - LLS (P) – HBRM (P) – MIE (P) – GERM (S) – LLS (S) – Finish | 15.2 |



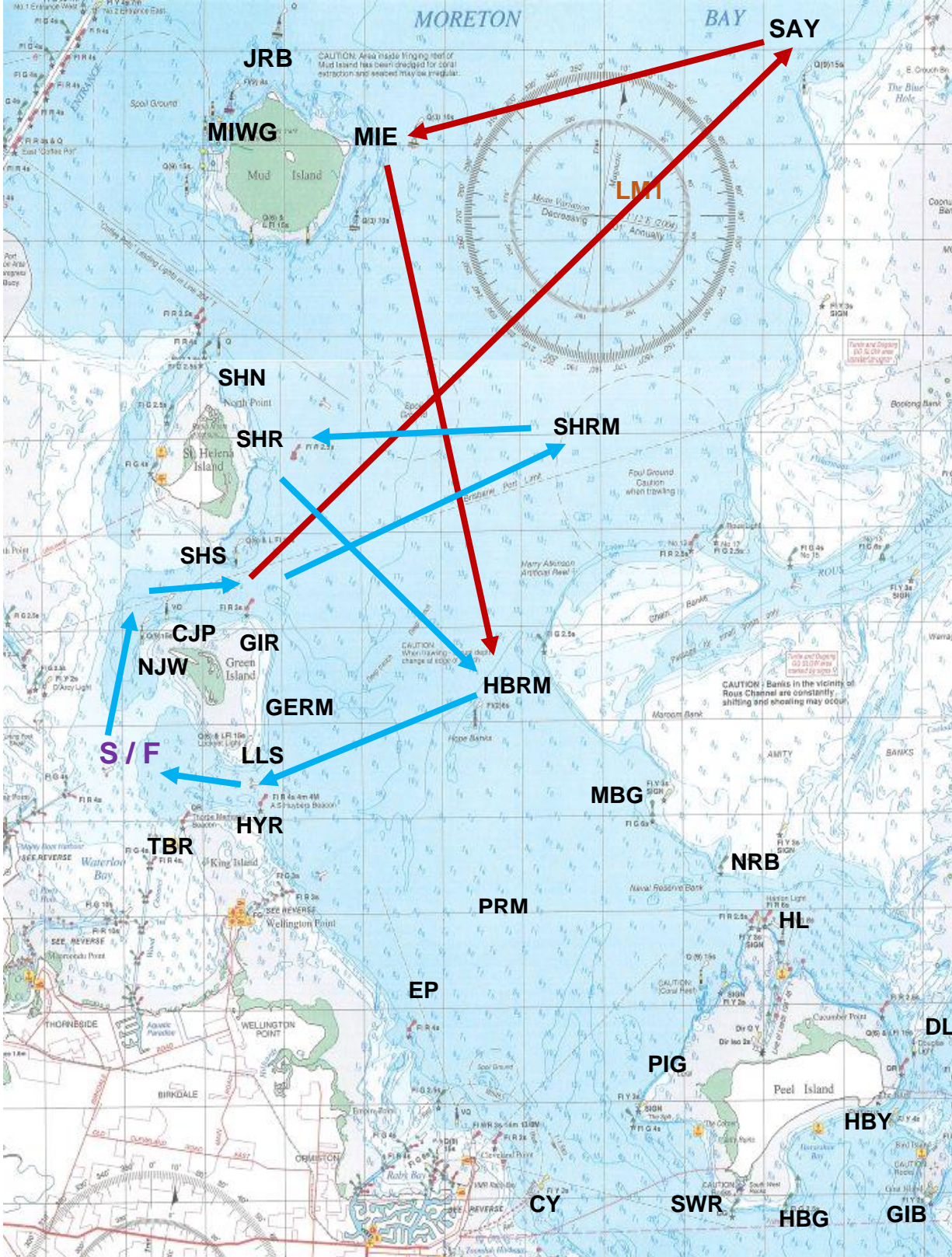
THE RQYS YACHT RACING COURSE BOOK

| | | |
|------------|---|------|
| 15A | Start – NJW (S) – CJP (S) – GIR (S) – HBRM (P) – MIWG (S) – JRB (S) – MIE (S) – HBRM (S) – LLS (S) — Finish | 21.5 |
| 15B | Start – NJW (S) – CJP (S) – GIR (S) – HBRM (P) – MISG (P) – GERM (S) – LLS (S) — Finish | 17 |
| 15C | Start – NJW (S) – CJP (S) – GIR (S) – HBRM (P) – SHR (P) – GERM (S) – LLS (S) — Finish | 13.6 |



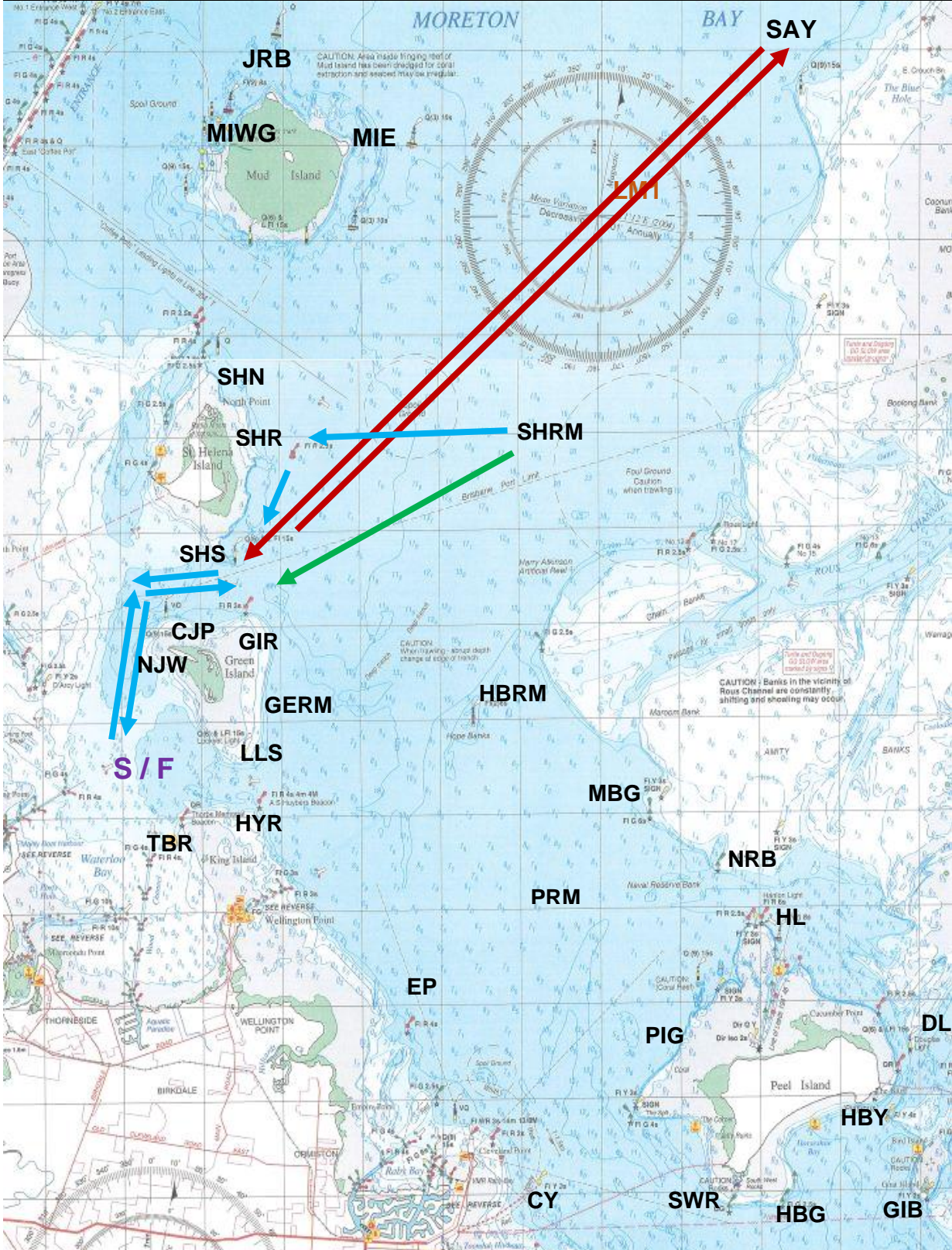
THE RQYS YACHT RACING COURSE BOOK

| | | |
|------------|--|------|
| 16A | Start - NJW (S) – CJP (S) – SHS (P) – SAY (P) – MIE (P) – HBRM (S) – LLS (S) – Finish | 30 |
| 16B | Start – NJW (S) – CJP (S) – SHS (P) – SHRM (P) – SHR (P) – HBRM (S) – LLS (S) – Finish | 16.2 |



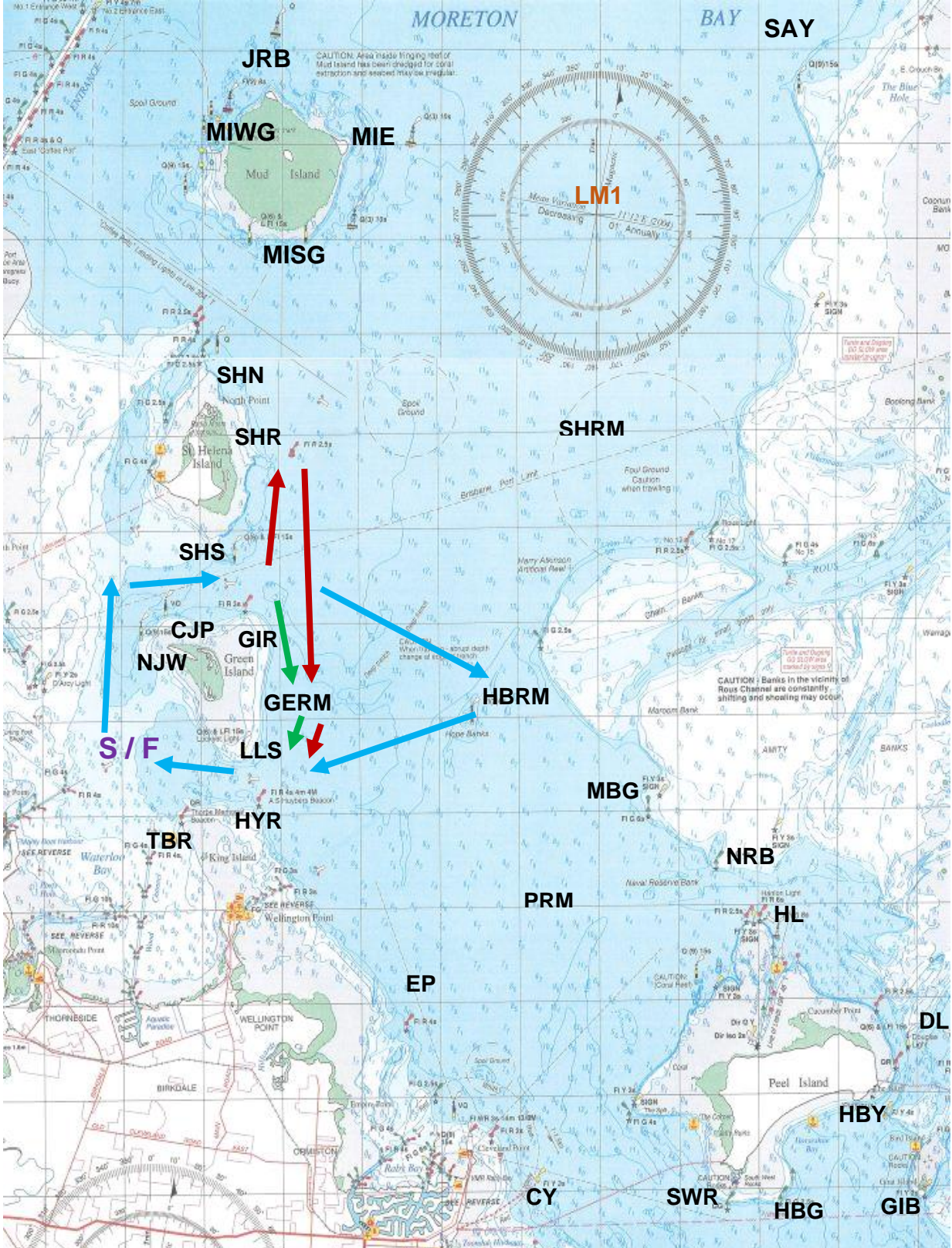
THE RQYS YACHT RACING COURSE BOOK

| | | |
|------------|--|------|
| 17A | Start - NJW (S) – CJP (S) – SHS (P) – SAY (P) – SHS (S) – CJP (P) – NJW (P) – Finish | 27.6 |
| 17B | Start – NJW (S) – CJP (S) – SHS(P) – SHRM (S) – SHR (S) – SHS (S) – CJP (P) – NJW (P) – Finish | |
| 17C | Start – NJW (S) – CJP (S) – SHS(P) – SHRM (S) – SHS (S) – CJP (P) – NJW (P) – Finish | 13.3 |



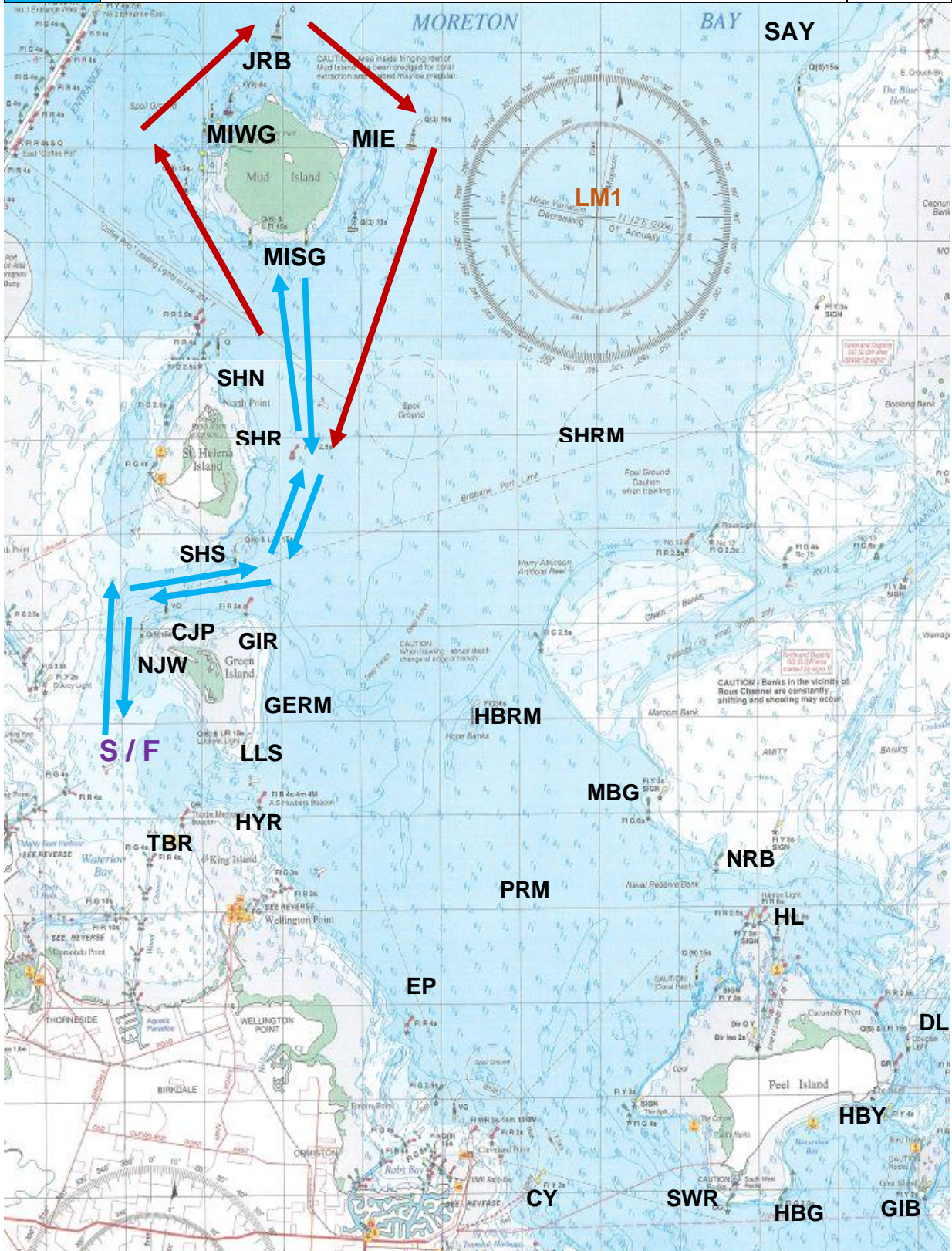
THE RQYS YACHT RACING COURSE BOOK

| | | |
|-----|---|-----|
| 18A | Start – NJW (S) – CJP (S) – SHS (P) – SHR (S) – GERM (S) – LLS (S) – Finish | |
| 18B | Start – NJW (S) – CJP (S) – GIR (S) – HBRM (S) – LLS (S) – Finish | 9.7 |
| 18C | Start – NJW (S) – CJP (S) – GIR (S) – GERM (S) – LLS (S) – Finish | 6.1 |



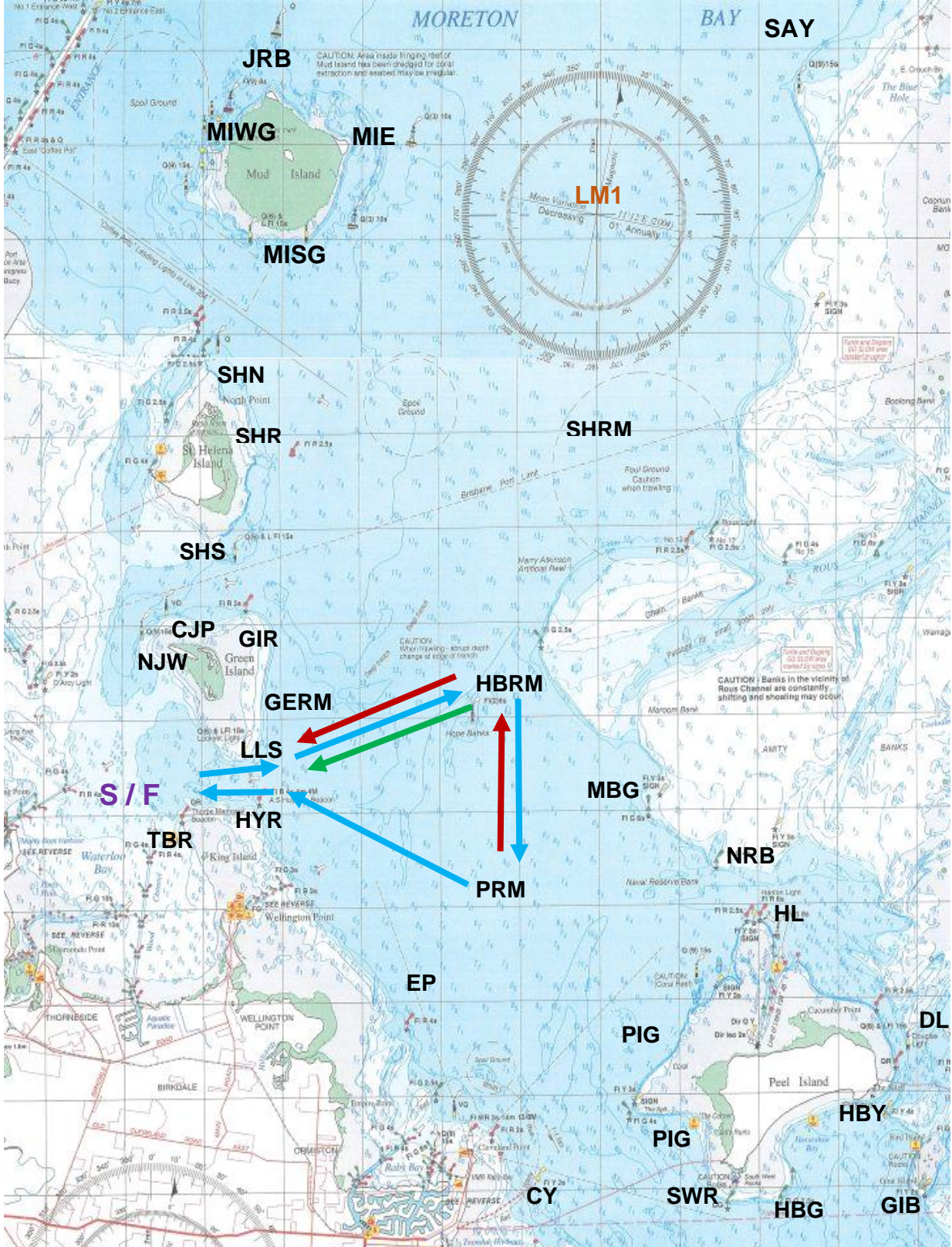
THE RQYS YACHT RACING COURSE BOOK

| | | |
|-----|---|------|
| 19A | Start – NJW (S) – CJP (S) – SHS (P) – SHR (P) – MIWG (S) – JRB (S) – MIE (S) – SHR (S) – SHS (S) – CJP (P) – NJW (P) – Finish | 18.3 |
| 19B | Start – NJW (S) – CJP (S) – SHS (P) – SHR (P) – MISG (S) – SHR (S) – SHS (S) – CJP (P) – NJW (P) – Finish | 12.2 |



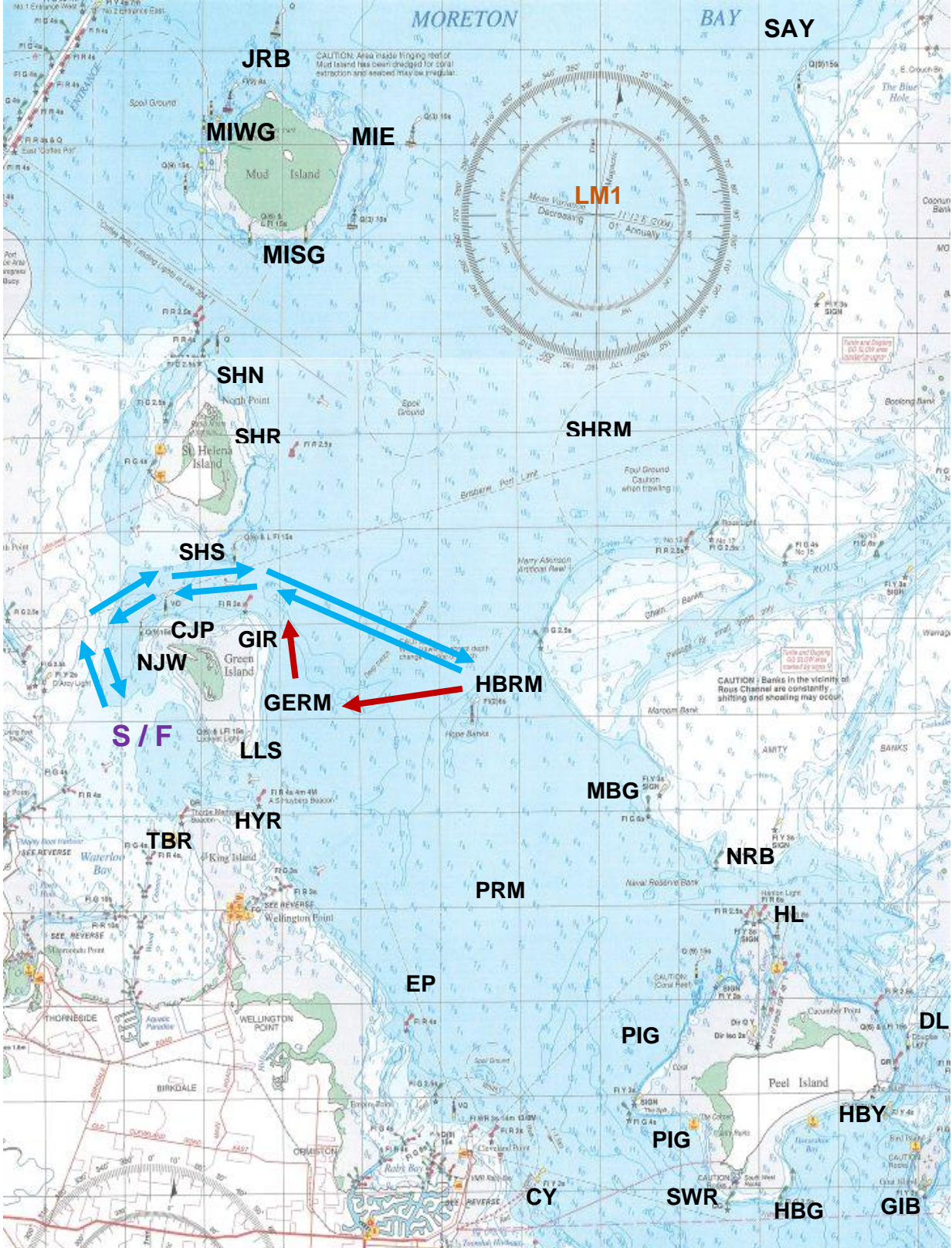
THE RQYS YACHT RACING COURSE BOOK

| | | |
|-----|--|------|
| 20A | Start – LLS (P) – HBRM (S) – PRM (S) – HBRM (P) – LLS (S) – Finish | 12.4 |
| 20B | Start – LLS (P) – HBRM (S) – PRM (S) – HYR (P) – Finish | 10.6 |
| 20C | Start – LLS (P) – HBRM (S) – LLS (S) – Finish | 8 |



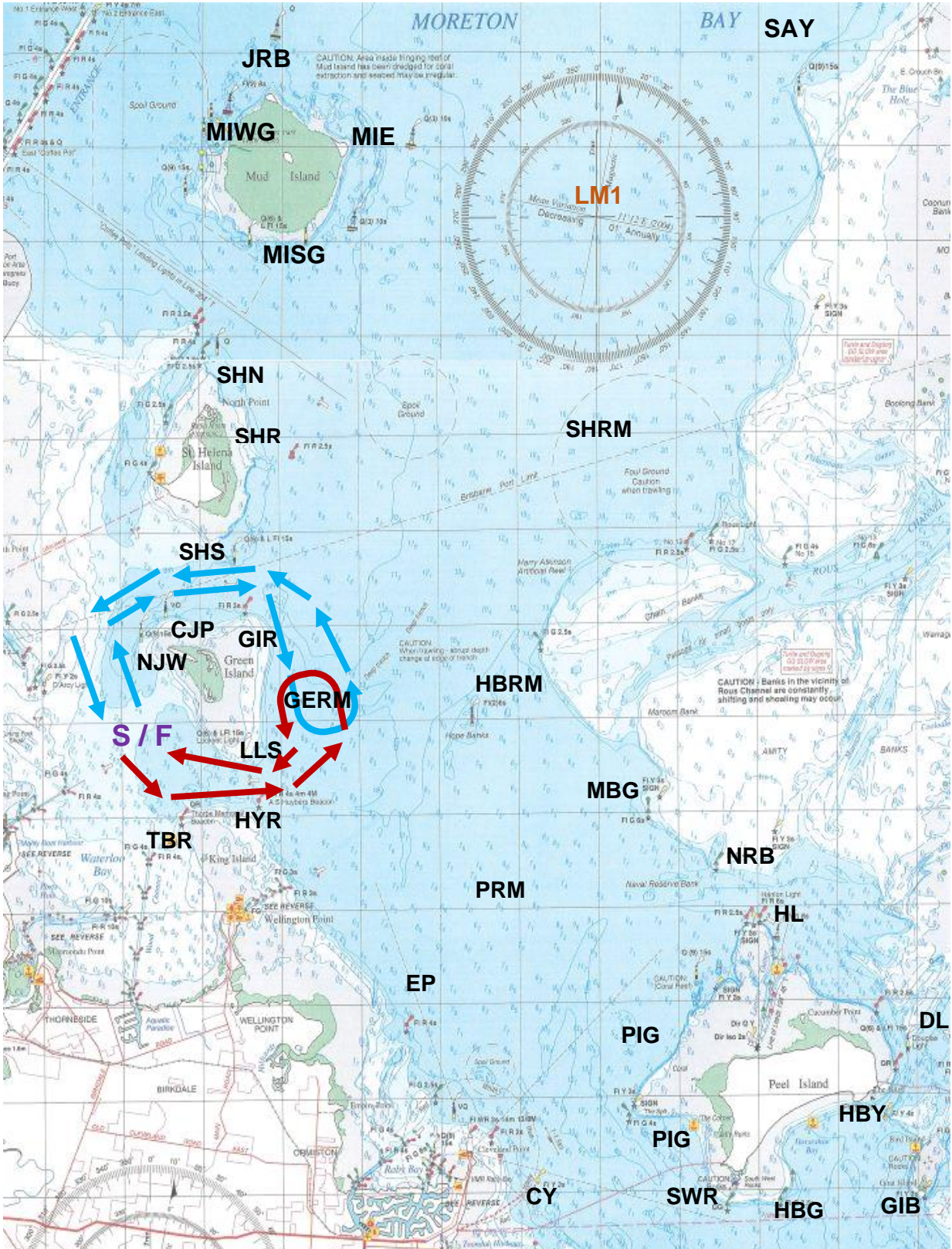
THE RQYS YACHT RACING COURSE BOOK

| | | |
|-----|--|--|
| 21A | Start – NJW (S) – CJP (S) – GIR (S) – HBRM (S) – GERM (S) – GIR (P) – CJP (P) – NJW (P) – Finish | |
| 21B | Start – NJW (S) – CJP (S) – GIR (S) – HBRM (S) – GIR (P) – CJP (P) – NJW (P) – Finish | |
| 21C | | |



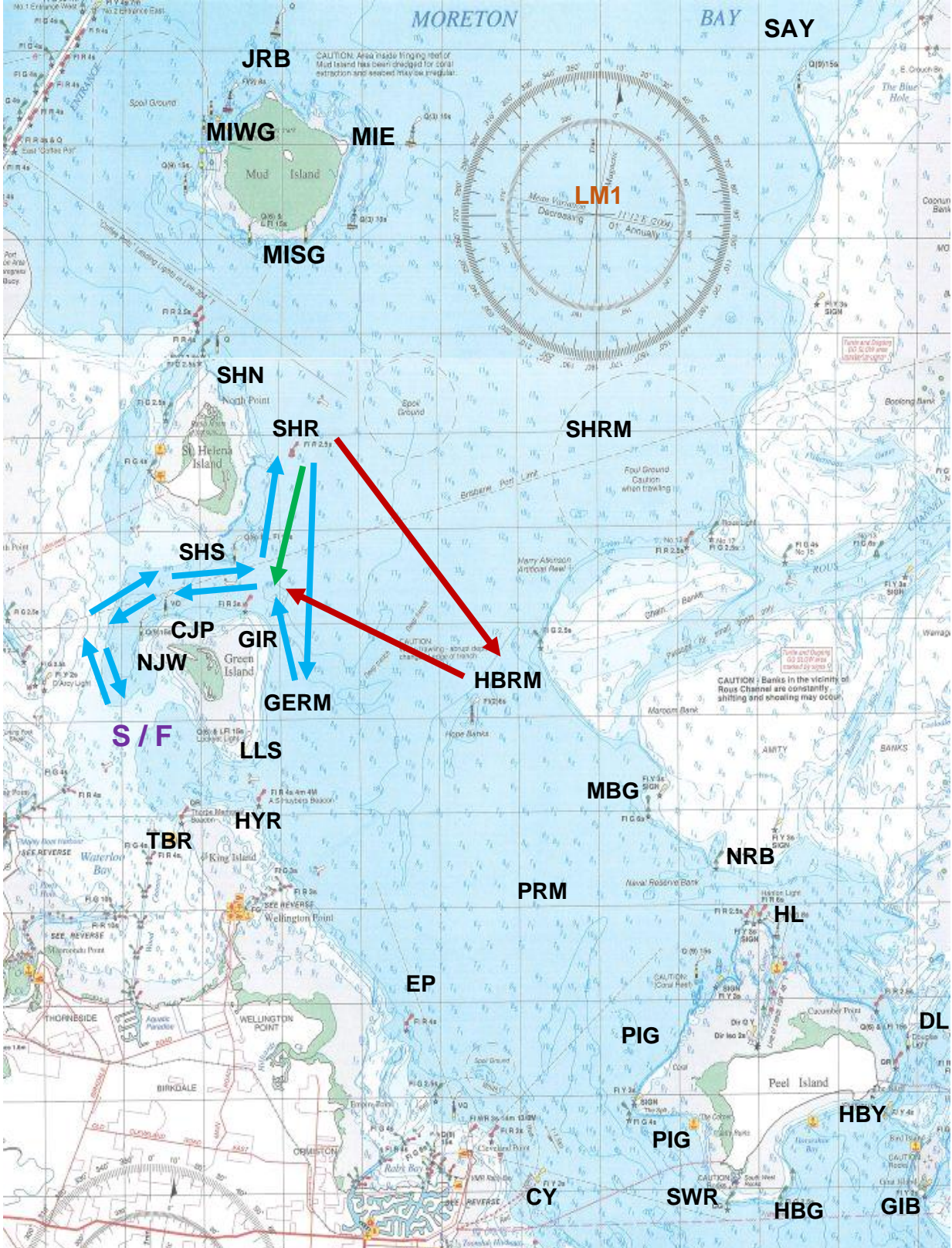
THE RQYS YACHT RACING COURSE BOOK

| | | |
|-----|--|--|
| 22A | Start – NJW (S) – CJP (S) – GIR (S) – GERM (P) – GIR (P) – CJP (P) – NJW (P) – LLS (P) – GERM (P) – LLS (S) – Finish | |
| 22B | Start – NJW (S) – CJP (S) – GIR (S) – GERM (P) – GIR (P) – CJP (P) – NJW (P) – LLS (P) – GERM (P) – LLS (S) – Finish | |
| 22C | | |



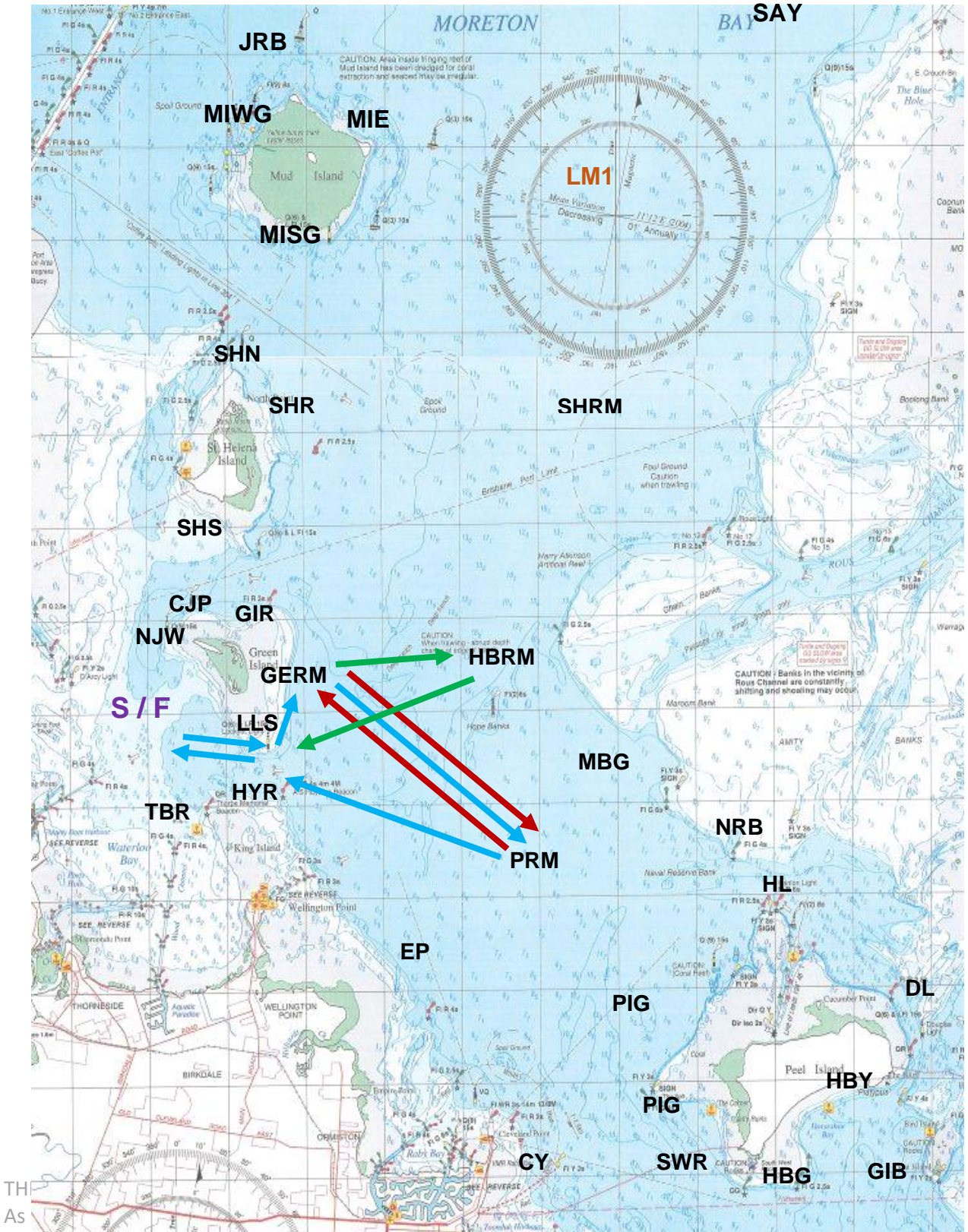
THE RQYS YACHT RACING COURSE BOOK

| | | |
|-----|---|--|
| 23A | Start – NJW (S) – CJP (S) – SHS (P) – SHR (S) – HBRM (S) GIR (P) – CJP (P) – NJW (P) – Finish | |
| 23B | Start – NJW (S) – CJP (S) – SHS (P) – SHR (S) – GERM (S) GIR (P) – CJP (P) – NJW (P) – Finish | |
| 23C | Start – NJW (S) – CJP (S) – SHS (P) – SHR (S) – SHS (S) – CJP (P) – NJW (P) – Finish | |



THE RQYS YACHT RACING COURSE BOOK

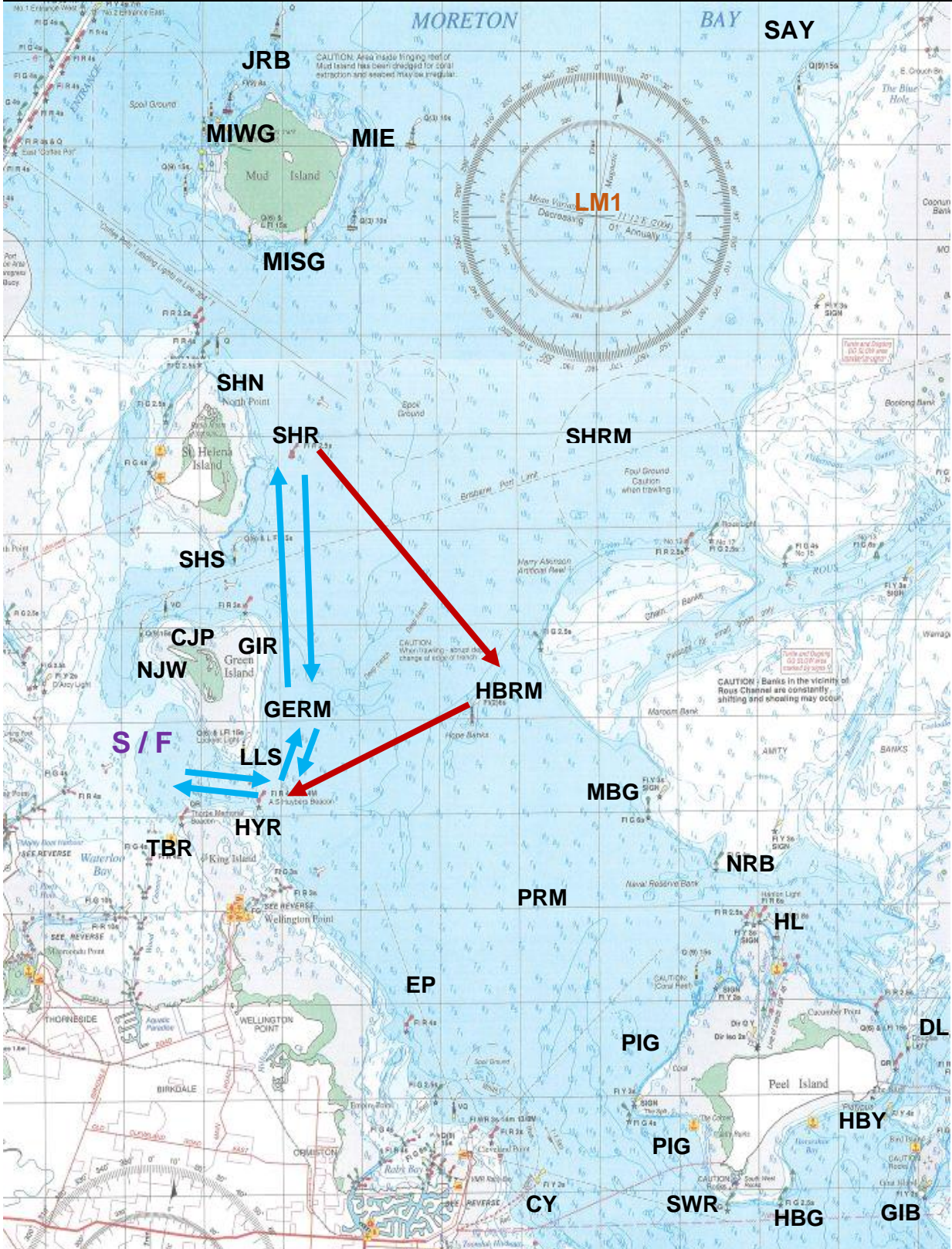
| | | |
|-----|--|--|
| 24A | Start – LLS (P) – GERM (S) – PRM (S) – GERM (S) – PRM (S) – HYR (P) – Finish | |
| 24B | Start – LLS (P) – GERM (S) – PRM (S) – HYR (P) – Finish | |
| 24C | Start – LLS (P) – GERM (S) – HBRM (S) – LLS (S) – Finish | |



TH
AS

THE RQYS YACHT RACING COURSE BOOK

| | | |
|-----|--|--|
| 25A | Start – LLS (P) – GERM (P) – SHR (S) – HBRM (S) – LLS (S) – Finish | |
| 25B | Start – LLS (P) – GERM (P) – SHR (S) – GERM (S) – LLS (S) – Finish | |
| 25C | | |



THE RQYS YACHT RACING COURSE BOOK

| | | |
|-----|---|--|
| 26A | | |
| 26B | Start – NJW (S) – CJP (S) – SHS (P) SHR (S) – HBRM (S) – LLS (S) - Finish | |
| 26B | | |

