

YACHTSHARE

2024 INTERNATIONAL FINN CLASS CHAMPIONSHIP

Saturday 20th – Sunday 21st July 2024

SAILING INSTRUCTIONS

(SI)

Including **Amendment 1**

Organising Authority
ROYAL QUEENSLAND YACHT SQUADRON LTD
578 Royal Esplanade, Manly, QLD 4179



The notation '[NP]' in a rule of the sailing instructions (SIs) means that a boat may not protest another boat for breaking that rule. This changes RRS 60.1(a).

The notation '[DP]' in a rule of the sailing instructions (SI's) means that a protest committee can award a penalty less than disqualification (including no penalty) at their discretion. This changes Rule 64.2

1. RULES

- 1.1. The regatta shall be governed by the rules as defined in the current Racing Rules of Sailing.
- 1.2. Rule 44.1 and Appendix P2.1 is changed so that the Two-Turns Penalty is replaced by a One-Turn Penalty.
- 1.3. Class rules shall apply.
- 1.4. Class Rule C.6.2 shall apply.
- 1.5. RRS Appendix P as amended by SI 14.2 will apply
- 1.6. [NP]Bow Numbers will be supplied at registration, failure to fit bow numbers prior to racing will result in a vessel being non-compliant and will receive DNC for all races the bow number is not displayed.
 - 1.6.1. Bow numbers should match your sail number and located no more than 300mm from the bow measured at deck level.
 - 1.6.2. If there is a clash in sail number with an overseas entry the first letter of the county will prefix the sail number e.g. NZ12 = N12, BER9 = B9.
- 1.7. Where there is a difference between the Notice of Race (NoR) and the Sailing Instructions (SI) the SI take precedence.
- 1.8. Competitors must follow Club Policies (<https://www.rqys.com.au/policiesanddocuments/>)

2. CHANGES TO SAILING INSTRUCTIONS

- 2.1. Any change to the sailing instructions will be posted before 0900 on the day it will take effect, except that any change to the schedule of races will be posted by 2000 on the day before it will take effect.

3. COMMUNICATIONS WITH COMPETITORS

- 3.1. Notices to competitors will be posted on the official notice board located at <https://www.rqys.com.au/24ifcqc/> .
- 3.2. The race office is located at The RQYS Sailing Office located adjacent to the Main Rigging Lawn, telephone 3396 8666, email sailing@rqys.com.au .
- 3.3. [DP] While racing, except in an emergency, a boat shall not make voice or data transmissions and shall not receive voice or data communication that is not available to all boats.

4. CODE OF CONDUCT

- 4.1. [DP] Competitors and support persons shall comply with reasonable requests from race officials.
- 4.2. [DP] Competitors and support persons shall handle any equipment or place advertising provided] by the organizing authority with care, seamanship, in accordance with any instructions for its use and without interfering with its functionality.

5. SIGNALS MADE ASHORE

- 5.1. Signals made ashore will be displayed at the official flag pole located at the top of the Eastern Gangway of the Bill Kirby Docks.
- 5.2. When flag AP is displayed ashore, '1 minute' is replaced with 'not less than 45 minutes' in Race Signals AP.



6. SCHEDULE OF RACES

6.1.

DATE	EVENT	FIRST WARNING SIGNAL or TIME
Saturday 20th July 2024	Racing	Not Before 0830 Hours
	World Famous Long Lunch Boardwalk Cafe	1300 Hours
Sunday 21st July 2024	Racing	Not Before 0830 Hours
	Presentation in RQYS Girdis Room	After Racing

6.2. Six (6) races are scheduled for the Championship.

6.3. Three (3) races per day are planned back to back. Additional races may be sailed on any day provided that the regatta does not become more than two (2) races ahead of schedule. No more than four (4) races shall be sailed in one day.

6.4. No warning signal shall be made after 1300 hours on Sunday 21st July 2024.

7. CLASS FLAGS

7.1. The class flag shall be a white flag with the Finn insignia.

8. RACING AREA

8.1. SI Attachment A shows the location of the racing area.

9. COURSES

9.1. The diagram in SI Attachment B shows the courses, including the approximate angles between legs, the order in which marks are to be passed, and the side on which each mark is to be left.

9.2. No later than the warning signal, the race committee signal vessel will display the course to be sailed.

10. MARKS

10.1. Marks are as described in SI Attachment B.

11. THE START

11.1. The starting line is between a staff displaying an orange flag on the signal vessel at the starboard end and the course side of the port-end starting mark.

11.2. A boat that does not start within 5 minutes after her starting signal will be scored Did Not Start without a hearing. This changes RRS A5.1 and A5.2.

12. CHANGE OF THE NEXT LEG OF THE COURSE

12.1. To change the next leg of the course, the race committee will lay a new mark (or move the finishing line) and remove the original mark as soon as practicable. When in a subsequent change a new mark is replaced, it will be replaced by an original mark.

12.2. If Mark 1 is changed Mark 1A will be ignored.

13. THE FINISH

13.1. The finishing line is between a staff displaying a blue flag on the finishing vessel at the starboard end and the course side of the port end finishing mark.



14. PENALTY SYSTEM

- 14.1. Rule 44.1 and Appendix P2.1 is changed so that the Two-Turns Penalty is replaced by a One-Turn Penalty.
- 14.2. RRS P2.3 will not apply and RRS P2.2 is changed so that it will apply to any penalty after the first one. After the second penalty, any breach of RRS 42 may result in the protest committee taking further action under RRS 2 and/or RRS 69.

15. TIME LIMITS AND TARGET TIMES

- 15.1. The Race Time Limit (see RRS 35), and the Finishing Window are shown in the table below.

Target Time	Race Time Limit	Finishing Window
Forty (40) Minutes	Seventy (70) Minutes	Fifteen (15) Minutes

- 15.2. The Finishing Window is the time for boats to finish after the first boat sails the course and finishes. Boats failing to finish within the Finishing Window, and not subsequently retiring, penalized or given redress, will be scored Time Limit Expired (TLE) without a hearing. A boat scored TLE shall be scored points for the finishing place one more than the points scored by the last boat that finished within the Finishing Window. This changes RRS 35, A5.1, A5.2 and A10.
- 15.3. Failure to meet the Target Time will not be grounds for redress. This changes RRS 62.1(a).

16. HEARING REQUESTS

- 16.1. The protest time limit is 60 minutes after the last boat finishes the last race of the day or the race committee signals no more racing today, whichever is later. The time will be posted on the official notice board.
- 16.2. Hearing request forms are available from the race office at <https://www.rqys.com.au/documents-auditing/> or from the RQYS Sailing Office.
- 16.3. Notices will be posted no later than 30 minutes after the protest time limit to inform competitors of hearings in which they are parties or named as witnesses. Hearings will be held at a time and place advised on the hearing notice.

17. SCORING

- 17.1. Six (6) races are scheduled.
- 17.2. Two (2) races are required to be completed to constitute a series.
 - 17.2.1. When four (4) or fewer races have been completed, a boat's series score shall be the total of her race scores.
 - 17.2.2. When from five (5) to six (6) races have been completed, a boat's series score shall be the total of her race scores excluding her worst score.
- 17.3. All Division prizes shall be awarded based on the ranking of competitors in the overall results.

18. SAFETY REGULATIONS [DP][NP]

- 18.1. All skippers shall SIGN ON before racing each day and SIGN OFF at the earliest possible time after the completion of racing (but not later than the end of protest time). The sign on will be available near the Sailing Office & The Main Rigging Lawn.
- 18.2. All Maritime Queensland Aquatic Event conditions must be followed including:
 - 18.2.1. All Participating ships are not to impede power driven vessels traversing Manly Boat Harbour and associated channels.
 - 18.2.2. All Participating ships are to obey the gazetted speed limit in Manly Boat Harbour (6 knots).
- 18.3. No sailing vessel shall berth on or impeded traffic to/from the RQYS fuel dock without permission from the RQYS Sailing or Marina Office.
- 18.4. A boat that retires from a race shall notify the race committee at the first reasonable opportunity.



19. REPLACEMENT OF EQUIPMENT

- 19.1. No changes to helmsman shall be accepted after close of entries.
- 19.2. Substitution of damaged or lost equipment shall not be allowed unless authorised in writing by the Race Committee. Requests for substitution shall be made to the Race Committee in writing at the first reasonable opportunity and the damaged equipment and its replacement shall be submitted for inspection. This does not affect the masts and sails in Clause 6.2.

20. EQUIPMENT AND MEASUREMENT CHECKS

- 20.1. A boat or equipment may be inspected at any time for compliance with the class rules, notice of race and sailing instructions.
- 20.2. [DP] When instructed by a race official on the water, a boat shall proceed to a designated area for inspection.

21. OFFICIAL VESSELS

- 21.1. Official vessels will be identified by display of a white flag with black letters "RC", "J" or red letters "MEDIA".

22. [DP] SUPPORT TEAMS

- 22.1. Team leaders, coaches and other support persons shall stay outside areas where boats are racing from the time of the preparatory signal for the first start until all boats have finished or retired or the race committee signals a postponement, general recall or abandonment.

23. TRASH DISPOSAL

- 23.1. Trash may be placed aboard official or support person vessels.

24. [DP][NP] BERTHING

- 24.1. Restrictions may be placed on where vessels may be stored or rigged by the RQYS Sailing or Marina office.
- 24.2. Boats may only be stored on the RQYS rigging lawn for the duration of the regatta & 24hrs before/after the regatta, unless otherwise approved by the Organising Authority.
- 24.3. No tie down restraints may penetrate the ground deeper than 300mm due to lawn irrigation systems.

25. PRIZES

- 25.1. Prizes shall be awarded for 1st, 2nd and 3rd overall.
- 25.2. Other prizes may be awarded at the discretion of the Organising Authority.

26. RISK STATEMENT

- 26.1. RRS 3 states: 'The responsibility for a boat's decision to participate in a race or to continue to race is hers alone.' By participating in this event each competitor agrees and acknowledges that sailing is a potentially dangerous activity with inherent risks. These risks include strong winds and rough seas, sudden changes in weather, failure of equipment, boat handling errors, poor seamanship by other boats, loss of balance on an unstable platform and fatigue resulting in increased risk of injury. Inherent in the sport of sailing is the risk of permanent, catastrophic injury or death by drowning, trauma, hypothermia or other causes.
- 26.2. All participants are required to comply with any safety provisions as mandated under the Racing Rules of Sailing, the Australian Sailing Special Regulations Part 2 for Off The Beach Boats, and any Class Rules that may apply. The Squadron encourages and supports competitors who believe it is appropriate to exceed the above requirements (such as the wearing of helmets, body armor, impact vests, etc.) if they or their guardian believe that conditions and their personal circumstances warrant. All competitor's attention is drawn to the Risk Statement - Section 26 of the Sailing Instructions.



27. INSURANCE

- 27.1. Each participating boat shall be insured with valid third-party liability insurance with a minimum cover of \$10,000,000AUD per incident or the equivalent.

28. FURTHER INFORMATION:

- 28.1. For further information, please contact:

RQYS Sailing Administrator – Austin Sims 0404 900 546 or sailing@rqys.com.au

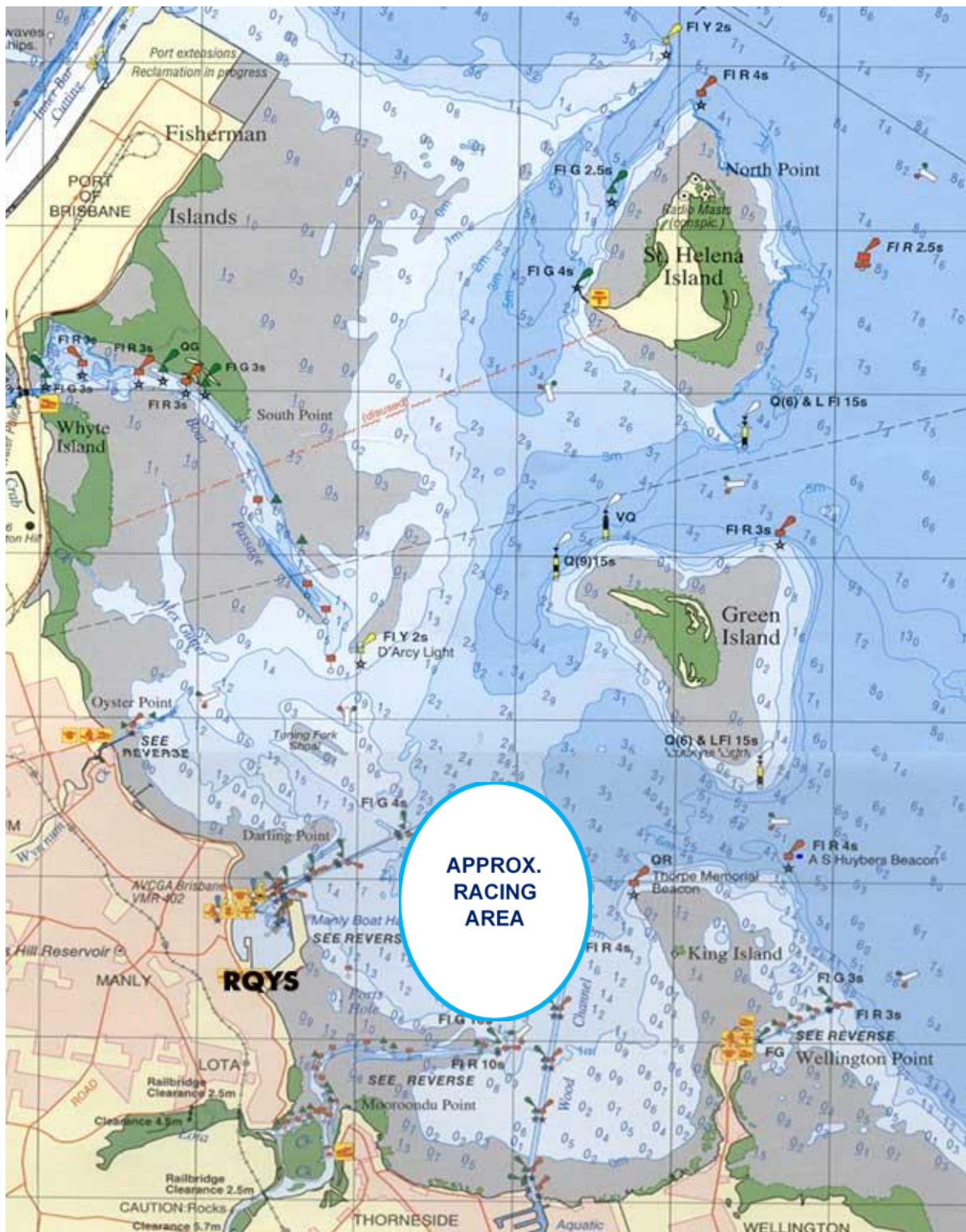


LOCATION INFORMATION

- [Regatta Notice Board](#) View the Regatta Notice Board to access Sailing Instructions, Entry, Amendments and more
- Accommodation: Ample and varied accommodation is available in the local area. Early bookings are recommended.
- The Manly Marina Cove Motel is located on the grounds of RQYS – www.manlymarinacove.com
- Limited [camping](#) facilities **may** be available in the grounds of RQYS.
- Other Local Accommodation Includes:
[The Manly Hotel](#), [Waterloo Bay Hotel](#), [Pelican's Nestle Inn](#), [Wynnum Anchor Motel](#)
- Access to RQYS: RQYS Reception (located on the left as you enter the club) is available to assist with access between the hours of 7am and 7pm.
- Manly Amenities: [North Sails](#) (Sailmaker) – Club Sponsor North Sails is located just down the road from the club at 1/264 Tingal Road, an 8 minute drive away.
- [Muir Marine QLD](#) (Chandlery) - Muir Marine have been serving the Marine Industry for over 100 years and supply everything in boating equipment. Located at 453 Esplanade a 3 minute drive from the club.
- [IGA Manly Village](#) – IGA is the closest grocery store to RQYS located just 3 minute drive away, at the corner of Stratton Tce & Cambridge Parade.
- [Manly Village Medical](#) – Is the closest medical centre to RQYS, located at 25 Cambridge Parade a 2 minute drive away.
- Local Weather: The RQYS Weather Station can be found at:
<https://www.rqys.com.au/weather-station/>
The Weather Station records from above the club Bay Lookout.
- BOM: Radar: <http://www.bom.gov.au/products/IDR663.loop.shtml>
Marine Forecast:
<http://www.bom.gov.au/qld/forecasts/moreton-bay.shtml>
- Other Popular forecasts:
- Predict Wind: <https://forecast.predictwind.com/table/>
Seabreeze: <https://www.seabreeze.com.au/weather/wind-forecast/brisbane>
WillyWeather: <https://wind.willyweather.com.au/qld/brisbane/brisbane.html>



SI ATTACHMENT A





SI ATTACHMENT B

CODE	COURSE	MARKS DESCRIPTION
LA1	Start – 1 – 1a – 4p – Finish	Marks 1: Yellow Inflatable
LA2	Start – 1 – 1a – 4s/4p – 1 – 1a – 4p – Finish	Marks 4s/4p: Orange Inflatable
LA3	Start – 1 – 1a – 4s/4p – 1 – 1a – 4s/4p – 1 – 1a – 4p – Finish	Mark 1a: Orange Teardrop
		Start Pin: Purple Inflatable
		Finish Pin: White Inflatable
		Change Mark: Green Inflatable

