



---

# **VX One Class**

# **WINTER NATIONALS**

7<sup>th</sup> – 9<sup>th</sup> June 2024

# **SAILING INSTRUCTIONS**

## **(SI)**

Organising Authority  
**ROYAL QUEENSLAND YACHT SQUADRON LTD**  
578 Royal Esplanade, Manly, QLD 4179

*The notation '[NP]' in a rule of the sailing instructions (SIs) means that a boat may not protest another boat for breaking that rule. This changes RRS 60.1(a).*

*The notation '[DP]' in a rule of the sailing instructions (SI's) means that the penalty for a breach of the rule may, at the discretion of the protest committee be less than disqualification. This changes Rule 64.2*

## **1. RULES**

- 1.1. The event is governed by the rules as defined in The Racing Rules of Sailing.
- 1.2. The VX One Australia 2023 (revised by the Trademark Holder (TMH)) class rules will apply.
- 1.3. The prescriptions and Special Regulations of Australian Sailing Part 2 will apply.
- 1.4. Appendix T – Arbitration will apply.
- 1.5. Where there is a difference between the Notice of Race (NoR) and the Sailing Instructions (SI) the SI take precedence.
- 1.6. [NP] [DP] Competitors must follow all Club Policies (<https://www.rqys.com.au/membership/policies-and-documents/>)

## **2. CHANGES TO SAILING INSTRUCTIONS**

- 2.1. Any change to the Sailing Instructions will be posted before 0830 on the day it will take effect, except that any change to the schedule of races will be posted by 2000 on the day before it will take effect.

## **3. COMMUNICATIONS WITH COMPETITORS**

- 3.1. Notices to competitors will be posted on the official notice board located at <https://www.rqys.com.au/vxone-winter-nationals/>.
- 3.2. Secondary to the Official noticeboard “instant messaging” system WhatsApp may be used to notify skippers of timely information, confirmation of days course, Protest Time limit etc. if in use a link to join the group can be found on the Office Noticeboard.
- 3.3. The race office is located at The RQYS Sailing Office located adjacent to The Main Lawn, telephone 3396 8666, email [sailing@rqys.com.au](mailto:sailing@rqys.com.au) .
- 3.4. On the water, the race committee intends to monitor and communicate with competitors on VHF radio channel 77 with 72 as alternate.
- 3.5. [DP] [NP] While racing, except in an emergency, a boat shall not make voice or data transmissions and shall not receive voice or data communication that is not available to all boats.

## **4. CODE OF CONDUCT**

- 4.1 [DP] [NP] Competitors and support persons shall comply with reasonable requests from race officials.
- 4.2 [DP] [NP] Competitors and support persons shall handle any equipment or place advertising provided by the organizing authority with care, seamanship, in accordance with any instructions for its use and without interfering with its functionality.

## **5. SIGNALS MADE ASHORE**

- 5.1. Signals made ashore will be displayed at the official flag pole located at the top of the Eastern Gangway of the Bill Kirby Docks.
- 5.2. When flag AP is displayed ashore, ‘1 minute’ is replaced with ‘not less than 45 minutes’ in Race Signals AP.

## 6. SCHEDULE OF RACES

### 6.1.

Date	Event	Time
Friday, 7 June 2024	Briefing First Warning Signal	0900 hrs Not before 1100 hours
Saturday, 8 June 2024	First Warning Signal	Not before 1000 hrs
Sunday, 9 June 2024	First Warning Signal Presentation on Boardwalk	Not before 1000 hrs ASAP after Racing

6.2. On the last scheduled day of racing no warning signal will be made after 1500 hrs.

6.3. No more than four (4) races shall be sailed on any one day.

6.4. A maximum of nine (9) race are scheduled for the series.

6.5. To alert boats that a race or sequence of races will begin soon, the orange starting line flag will be displayed with one sound at least five minutes before a warning signal is made.

## 7. CLASS FLAGS

7.1. The Class Flag shall be a white flag with the VX One insignia.

## 8. RACING AREA

8.1 SI Attachment A shows the location of the racing area.

## 9. COURSES

9.1. The diagram in SI Attachment B show the courses, including the approximate angles between legs, the order in which marks are to be passed, and the side on which each mark is to be left.

9.2. No later than the warning signal, the race committee signal vessel will display the approximate compass bearing of the first leg.

## 10. MARKS

10.1. Marks are as described in SI Attachment B.

10.2. If one of the gate marks is missing then the remaining mark shall be left to port.

## 11. THE START

11.1. The starting line is between a staff displaying an orange flag on the signal vessel at the starboard end and the course side of the port-end starting mark.

11.2. A boat that does not start within five (5) minutes after her starting signal will be scored Did Not Start (DNS) without a hearing. This changes RRS A5.1 and A5.2.

## 12. CHANGE THE NEXT LEG OF THE COURSE

12.1. To change the next leg of the course, the race committee will lay a new mark (or move the finishing line) and remove the original mark as soon as practicable. When in a subsequent change a new mark is replaced, it will be replaced by an original mark.

12.2. If Mark 1 is changed Mark 1A will be ignored.

## 13. THE FINISH

13.1. The finishing line will be between a staff displaying a blue flag on the race committee boat on the starboard side and an inflatable mark on the port end.

#### **14. PENALTY SYSTEM**

- 14.1. RRS44.1 is amended in that the penalty for breaking a rule of RRS Part 2 shall be a One-Turn Penalty, except the penalty for breaking a rule of RRS Part 2 occurring within the zone as defined in RRS shall be a Two-Turn Penalty.
- 14.2. The penalty, if any, for any infringement of the rules other than RRS Part 2 is at the sole discretion of the protest committee and may be other than disqualification. This changes RRS64.1.

#### **15. TIME LIMITS AND TARGET TIMES**

- 15.1. The Race Time Limit (see RRS 35), and the Finishing Window are shown in the table below.

Race Target Time	Race Time Limit	Finishing Window
40 Minutes	60 Minutes	15 Minutes

- 15.2. The Finishing Window is the time for boats to finish after the first boat sails the course and finishes. Boats failing to finish within the Finishing Window, and not subsequently retiring, penalized or given redress, will be scored Did Not Finish (DNF) without a hearing. This changes rules 35, A4 and A5.
- 15.3. Failure to meet the Target Time will not be grounds for redress. This changes RRS 62.1(a).

#### **16. HEARING REQUESTS**

- 16.1. The protest time limit is 60 minutes after the last boat finishes the last race of the day or the race committee signals no more racing today, whichever is later. The time will be posted on the official notice board.
- 16.2. Hearing request forms are available from the race office near the Main Rigging Lawn or online at: <https://www.rqys.com.au/documents-auditing/>
- 16.3. Notices will be posted no later than 30 minutes after the protest time limit to inform competitors of hearings in which they are parties or named as witnesses. Hearings will be held at a time and place advised on the hearing notice.

#### **17. SCORING**

- 17.1. Four (4) races are required to be completed to constitute a series.
- 17.1.1. When fewer than four (4) races have been completed, a boat's series score shall be the total of her race scores.
- 17.1.2. When from four (4) to seven (7) races have been completed, a boat's series score shall be the total of her race scores, excluding her worst score.
- 17.1.3. When eight (8) or more races have been completed, a boat's series score shall be the total of her race scores, excluding her worst two (2) scores.

#### **18. [DP][NP]SAFETY REGULATIONS**

- 18.1. A boat that retires from a race shall notify the race committee at the first reasonable opportunity.
- 18.2. All skippers shall SIGN ON before racing each day and SIGN OFF at the earliest possible time after the completion of racing (but not later than the end of protest time). The sign on will be available near the Sailing Office (adjacent the main rigging lawn).
- 18.3. All Maritime Queensland Aquatic Event conditions must be followed including:
- 18.3.1. All Participating ships are not to impede power driven vessels traversing Manly Boat Harbour and associated channels.
- 18.3.2. All Participating ships are to obey the gazetted speed limit in Manly Boat Harbour (6 knots).
- 18.3.3. No Spinnakers are to be flown in the Manly Harbour 6-knot area.
- 18.4. Except in an emergency no sailing vessel shall berth on or impeded traffic to/from the RQYS fuel dock without permission from the RQYS Sailing or Marina Office.

## **19. REPLACEMENT OF CREW OR EQUIPMENT**

### **19.1. [DP] Substitution of competitors:**

- (a) The crew shall consist of a minimum of 2 persons. Any member of the crew may act as helmsperson at any time if they meet the provisions of 19.1 (d).
- (b) No crew member shall be substituted during an event unless express written consent is granted by the or Race Committee. If a crew substitution is requested, the total crew weight shall not change by more than 10 kg.
- (c) Any sailor may skipper or crew only if they are not or will not be compensated for competing. Skipper and crew may be required to sign a declaration of compliance.
- (d) In a class sanctioned event each helmsperson shall be a VXOACA full or associate member in good standing with the VXOACA.

### **19.2. [DP] Substitution of damaged or lost equipment is not allowed unless authorized in writing by the Race Committee. Requests for substitution shall be made to the committee at the first reasonable opportunity, which may be after the race.**

## **20. EQUIPMENT AND MEASUREMENT CHECKS**

### **20.1. A boat or equipment may be inspected at any time for compliance with the class rules, notice of race and sailing instructions.**

### **20.2. [DP][NP] When instructed by a race official on the water, a boat shall proceed to a designated area for inspection.**

## **21. OFFICIAL VESSELS**

### **21.1. Official vessels will be identified by display of a white flag with black letters 'RC' or red 'MEDIA'.**

## **22. [DP] SUPPORT TEAMS**

### **22.1. Team leaders, coaches and other support personnel shall stay a minimum of 50m outside the area where boats are racing from the Warning Signal until the last boat in that race has finished or race committee signals a postponement, general recall or abandonment, without the approval of the Race Committee. Support boats may provide assistance to boats finished racing or retired no closer than 200m below the starting line.**

### **22.2. SI 22.1 does not apply to Media Vessels approved by the Race Committee.**

### **22.3. The penalty for failing to comply with SI 22.1 may be the disqualification of all boats associated with the infringing party, parties, boat and or boats.**

## **23. TRASH DISPOSAL**

### **23.1. Trash may be placed aboard official or support person vessels.**

## **24. [DP][NP] BERTHING**

### **24.1. Boats shall be kept in their assigned places while in the harbour.**

### **24.2. Planned Berthing shall be at VIP Docks 2, 4 & 5.**

### **24.3. Boats shall follow all berthing directions from the Sailing or Marina Office to the best of their ability.**

## **25. [DP][NP] HAUL-OUT RESTRICTIONS**

### **25.1. Boats shall not be hauled out during the event.**

### **25.2. Requests for haul out shall be made to the race committee at the first reasonable opportunity, which may be after the race.**

## 26. PRIZES

- 26.1. Prizes will be given as follows:
  - 26.1.1. First, Second & Third in Scratch.
  - 26.1.2. First Masters Skipper over 60.
  - 26.1.3. First Youth Skipper under 21 (if less than 2 youth skippers are entered the prize will go to the first U21 participant).
  - 26.1.4. First Female participant.
  - 26.1.5. Age prize eligibility shall be age at 07/06/2024.

## 27. RISK STATEMENT

- 27.1. RRS 3 states: 'The responsibility for a boat's decision to participate in a race or to continue to race is hers alone.' By participating in this event each competitor agrees and acknowledges that sailing is a potentially dangerous activity with inherent risks. These risks include strong winds and rough seas, sudden changes in weather, failure of equipment, boat handling errors, poor seamanship by other boats, loss of balance on an unstable platform and fatigue resulting in increased risk of injury. **Inherent in the sport of sailing is the risk of permanent, catastrophic injury or death by drowning, trauma, hypothermia or other causes.**
- 27.2. All participants are required to comply with any safety provisions as mandated under the Racing Rules of Sailing, the Australian Sailing Special Regulations Part 2 for Off The Beach Boats, and any Class Rules that may apply. The Squadron encourages and supports competitors who believe it is appropriate to exceed the above requirements (such as the wearing of helmets, body armour, impact vests, etc.) if they or their guardian believe that conditions and their personal circumstances warrant. All competitor's attention is drawn to the Risk Statement - Section 15 of the Notice of Race & Section 27 of the Sailing Instructions.

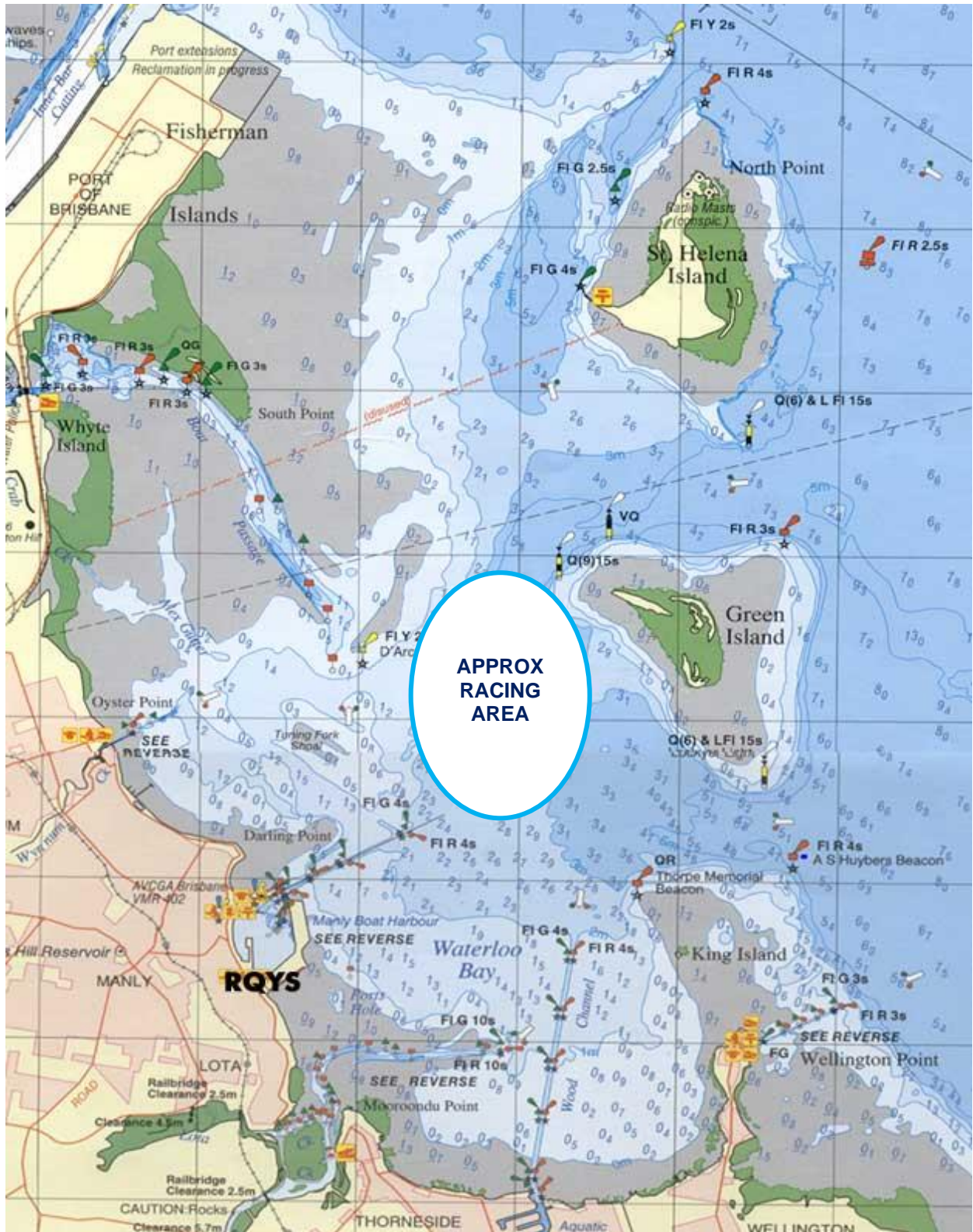
## 28. INSURANCE

- 28.1. Each participating boat shall be insured with valid third-party liability insurance with a minimum cover of \$10,000,000AUD per incident or the equivalent.

## 29. FURTHER INFORMATION

- 29.1. For further information please contact:
  - RQYS Sailing: 07 3396 8666 / [sailing@rqys.com.au](mailto:sailing@rqys.com.au)
  - 578 Royal Esplanade MANLY QLD 4179 AUS
  - [www.rqys.com.au](http://www.rqys.com.au)

# SI ATTACHMENT A



## SI ATTACHMENT B

CODE	COURSE	MARKS DESCRIPTION
LA2	Start – 1 – 1a – 4s/4p – 1 – 1a – 4p – Finish	<b>Marks 1:</b> Yellow Inflatables <b>Marks 4s/4p:</b> Orange Inflatables <b>Start Pin &amp; Mark 1a:</b> Orange Teardrops <b>Finish Pin:</b> White Inflatable <b>Change Mark:</b> Green Inflatable

