



---

# Nacra 15 & 17 Winter Regatta 2024

1<sup>st</sup> June to 2<sup>nd</sup> June 2024

## SAILING INSTRUCTIONS (SI)

Organising Authority

**ROYAL QUEENSLAND YACHT SQUADRON LTD**

578 Royal Esplanade, Manly, QLD 4179



*The notation '[NP]' in a rule of the sailing instructions (SIs) means that a boat may not protest another boat for breaking that rule. This changes RRS 60.1(a).*

*The notation '[DP]' in a rule of the sailing instructions (SI's) means that a protest committee can award a penalty less than disqualification (including no penalty) at their discretion. This changes Rule 64.2*

## **1. RULES**

- 1.1. The event is governed by the rules as defined in The Racing Rules of Sailing.
- 1.2. The Australian Sailing prescriptions and special regulations Part 2 of Australian Sailing apply.
- 1.3. Competitors must follow RQYS Club Policies (<https://www.rqys.com.au/policiesanddocuments/>)

## **2. CHANGES TO SAILING INSTRUCTIONS**

- 2.1. Any change to the sailing instructions will be posted before 0900 on the day it will take effect, except that any change to the schedule of races will be posted by 2000 on the day before it will take effect.

## **3. COMMUNICATIONS WITH COMPETITORS**

- 3.1. The online official notice board is located at <https://www.rqys.com.au/nacra-15-17-winter-regatta/>.
- 3.2. Secondary to the Official noticeboard "instant messaging" system WhatsApp may be used to notify skippers of timely information, confirmation of days course, Protest Time limit etc. if in use a link to join the group can be found on the Office Noticeboard.
- 3.3. The race office is located at The RQYS Sailing Office located adjacent to the Main Rigging Lawn, telephone 3396 8666, email [sailing@rqys.com.au](mailto:sailing@rqys.com.au).

## **4. CODE OF CONDUCT**

- 4.1. [DP] Competitors and support persons shall comply with reasonable requests from race officials.
- 4.2. [DP] Competitors and support persons shall handle any equipment or place advertising provided by the organizing authority with care, seamanship, in accordance with any instructions for its use and without interfering with its functionality.

## **5. SIGNALS MADE ASHORE**

- 5.1. Signals made ashore will be displayed at the official flag pole located at the top of the Eastern Gangway of the Bill Kirby Docks.
- 5.2. When flag AP is displayed ashore, '1 minute' is replaced with 'not less than 45 minutes' in Race Signals AP.

## 6. SCHEDULE OF RACES

### 6.1.

Date	Event	Time
01/06/2024	Briefing	1030 hrs
	Racing	First warning not before 1230 hrs
	BBQ	ASAP after racing
02/06/2024	Racing	First warning not before 1130 hrs
	Presentation	ASAP after racing

6.2. On the last scheduled day of racing no warning signal will be made after 1500 hrs.

6.3. There will be a maximum of three (3) races per day.

## 7. CLASS FLAGS

7.1. The class flags are:

7.1.1.

Division	Flag
Nacra 15	White flag with blue class insignia
Nacra 17	White flag with black class insignia

## 8. RACING AREA

8.1. SI Attachment A shows the location of the racing area.

## 9. COURSES

9.1. The diagram in SI Attachment B shows the course, including the approximate angles between legs, the order in which marks are to be passed, and the side on which each mark is to be left.

## 10. MARKS

10.1. The marks are as described in SI Attachment B.

10.2. If one of the gate marks is missing, then the remaining mark shall be left to port.

## 11. THE START

11.1. The starting line is between a staff displaying an orange flag on the signal vessel at the starboard end and the course side of the port-end starting mark.

11.2. Boats whose warning signal has not been made shall avoid the starting area during the starting sequence for other races.

11.3. A boat that does not start within 4 minutes after her starting signal will be scored Did Not Start without a hearing. This changes RRS A5.1 and A5.2.

## 12. CHANGE OF THE NEXT LEG OF THE COURSE

12.1. To change the next leg of the course, the race committee will lay a new mark (or move the finishing line) and remove the original mark as soon as practicable.

12.2. If mark 1 is changed, mark 1A will be ignored.

**13. THE FINISH**

13.1. The finishing line is between a staff displaying a blue flag on the finishing mark at the starboard end and the course side of the port end finishing mark.

**14. PENALTY SYSTEM**

14.1. RRS Appendix P applies with the Two-Turns penalty replaced by the One-Turn Penalty.

**15. TIME LIMITS**

15.1. The Race Time Limit (see RRS 35), and the Finishing Window are shown in the table below.

Race Time Limit	Finishing Window
55 minutes	15 Minutes

15.2. The Finishing Window is the time for boats to finish after the first boat sails the course and finishes. Boats failing to finish within the Finishing Window, and not subsequently retiring, penalized or given redress, will be scored Time Limit Expired (TLE) without a hearing. A boat scored TLE shall be scored points for the finishing place one more than the points scored by the last boat that finished within the Finishing Window. This changes RRS 35, A5.1, A5.2 and A10.

**16. HEARING REQUESTS**

16.1. The protest time limit is 60 minutes after the last boat in that class finishes the last race of the day or the race committee signals no more racing today, whichever is later. The time will be posted on the official notice board.

16.2. Hearing request forms are available from the race office at <https://www.rqys.com.au/documents-auditing/>.

16.3. Notices will be posted no later than 30 minutes after the protest time limit to inform competitors of hearings in which they are parties or named as witnesses. Hearings will be held at a time and place advised on the hearing notice.

**17. SCORING**

17.1. 1 race is required to be completed to constitute a series.

17.2. A boat's series score shall be the total of her race scores excluding her worst score.

17.2.1. When fewer than 6 races have been completed, a boat's series score will be the total of her race scores.

17.2.2. When 6 races have been completed, a boat's series score will be the total of her race scores excluding her worst score.

## **18. SAFETY REGULATIONS**

- 18.1. [DP] A boat that retires from a race shall notify the race committee at the first reasonable opportunity.
- 18.2. All skippers shall SIGN ON before racing each day and SIGN OFF at the earliest possible time after the completion of racing (but not later than the end of protest time). The sign on will be available near the Sailing Office & Rigging Lawn 2.
- 18.3. All Maritime Queensland Aquatic Event conditions must be followed including:
- 18.3.1. All Participating ships are not to impede power driven vessels traversing Manly Boat Harbour and associated channels.
  - 18.3.2. All Participating ships are to obey the gazetted speed limit in Manly Boat Harbour (6 knots).
- 18.4. No Spinnakers are to be flown in the Manly Harbour 6-knot area.
- 18.5. No sailing vessel shall berth on or impeded traffic to/from the RQYS fuel dock with out permission from the RQYS Sailing or Marina Office.

## **19. REPLACEMENT OF CREW OR EQUIPMENT**

- 19.1. [DP] Substitution of competitors is not allowed without prior written approval of the Race Committee.
- 19.2. [DP] Substitution of damaged or lost equipment is not allowed unless authorized in writing by the Race Committee. Requests for substitution shall be made to the committee at the first reasonable opportunity, which may be after the race.

## **20. EQUIPMENT AND MEASUREMENT CHECKS**

- 20.1. A boat or equipment may be inspected at any time for compliance with the class rules, notice of race and sailing instructions.
- 20.2. [DP] When instructed by a race official on the water, a boat shall proceed to a designated area for inspection.

## **21. OFFICIAL VESSELS**

- 21.1. Official vessels will be identified by displaying a white flag with letter 'RC' or 'J' in black or red 'MEDIA'.

## **22. [DP] SUPPORT PERSON VESSELS**

- 22.1. [DP] Support boats may be required to clearly display a flag or stickers provided by the OA with unique identification for that boat.
- 22.2. Support person vessels shall be required to register and may be required to pay a fee.
- 22.3. Support boats must comply with local regulations and event support boat regulations or sailing instructions.
- 22.4. Support boats must have a VHF radio capable of communicating on Chanel 16, 72 & 77.
- 22.5. Coaches/support boats shall make themselves available at all times while afloat to assist the race committee in the case of an emergency or rescue, as directed in person by the relevant race officer or via VHF radio.
- 22.6. Unless directed by the race committee, team leaders, coaches and other support persons shall stay outside areas were boats are racing from the time of the preparatory signal for the first fleet to start until all boats have finished or retired or the race committee signals a postponement, general recall or abandonment.

## **23. TRASH DISPOSAL**

- 23.1. Trash may be placed aboard official or support person vessels.

## 24. BERTHING

- 24.1. Restrictions may be placed on where vessels may be stored or rigged by the RQYS Sailing or Marina office.
- 24.2. No tie down restraints may penetrate the ground deeper than 300mm due to lawn irrigation systems.
- 24.3. Boats may only be stored on the RQYS rigging lawn for the duration of the regatta & 24hrs before/after the regatta, unless otherwise approved by the OA.

## 25. PRIZES

- 25.1. Prizes will be given as follows:
  - 25.1.1. 1<sup>st</sup>, 2<sup>nd</sup>, 3<sup>rd</sup> Nacra 15 Open
  - 25.1.2. 1<sup>st</sup> Master Apprentice Nacra 15
  - 25.1.3. 1<sup>st</sup> Youth Team (Under 21 Yrs) Nacra 15
  - 25.1.4. 1<sup>st</sup>, 2<sup>nd</sup>, 3<sup>rd</sup> Nacra 17 Open
  - 25.1.5. 1<sup>st</sup> Nacra C Foilers
  - 25.1.6. 1<sup>st</sup> Nacra Full Foiling
- 25.2. Other prizes may be awarded at the discretion of the Organising Authority.

## 26. RISK STATEMENT

- 26.1. RRS 3 states: 'The responsibility for a boat's decision to participate in a race or to continue to race is hers alone.' By participating in this event each competitor agrees and acknowledges that sailing is a potentially dangerous activity with inherent risks. These risks include strong winds and rough seas, sudden changes in weather, failure of equipment, boat handling errors, poor seamanship by other boats, loss of balance on an unstable platform and fatigue resulting in increased risk of injury. **Inherent in the sport of sailing is the risk of permanent, catastrophic injury or death by drowning, trauma, hypothermia or other causes.**
- 26.2. All participants are required to comply with any safety provisions as mandated under the Racing Rules of Sailing, the Australian Sailing Special Regulations Part 2 for Off The Beach Boats, and any Class Rules that may apply. The Squadron encourages and supports competitors who believe it is appropriate to exceed the above requirements (such as the wearing of helmets, body armor, impact vests, etc.) if they or their guardian believe that conditions and their personal circumstances warrant. All competitor's attention is drawn to the Risk Statement – SI 26 of the Sailing Instructions.

## 27. INSURANCE

- 27.1. Each participating boat shall be insured with valid third-party liability insurance with a minimum cover of \$10,000,000AUD per incident or the equivalent.



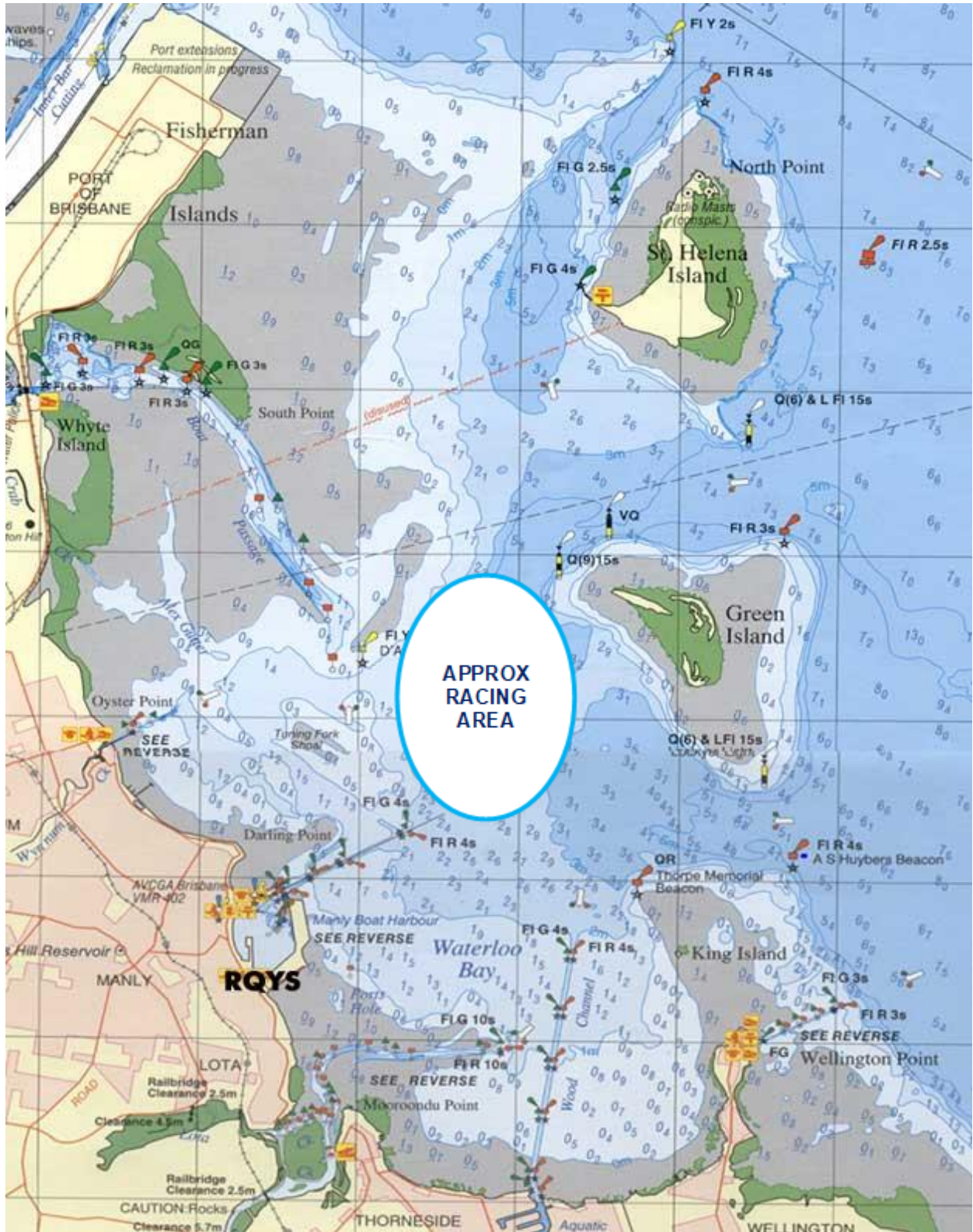
---

## LOCATION INFORMATION

- [Regatta Notice Board](#) View the Regatta Notice Board to access Sailing Instructions, Entry, Amendments and more
- Accommodation: Ample and varied accommodation is available in the local area. Early bookings are recommended.
- The Manly Marina Cove Motel is located on the grounds of RQYS – [www.manlymarinacove.com](http://www.manlymarinacove.com)
- Limited [camping](#) facilities **may** be available in the grounds of RQYS.
- Other Local Accommodation Includes:  
[The Manly Hotel](#), [Waterloo Bay Hotel](#), [Pelican's Nestle Inn](#), [Wynnum Anchor Motel](#)
- Access to RQYS: RQYS Reception (located on the left as you enter the club) is available to assist with access between the hours of 7am and 7pm.
- Manly Amenities: [North Sails](#) (Sailmaker) – Club Sponsor North Sails is located just down the road from the club at 1/264 Tingal Road, an 8 minute drive away.
- [Muir Marine QLD](#) (Chandlery) - Muir Marine have been serving the Marine Industry for over 100 years and supply everything in boating equipment. Located at 453 Esplanade a 3 minute drive from the club.
- [IGA Manly Village](#) – IGA is the closest grocery store to RQYS located just 3 minute drive away, at the corner of Stratton Tce & Cambridge Parade.
- [Manly Village Medical](#) – Is the closest medical centre to RQYS, located at 25 Cambridge Parade a 2 minute drive away.
- Local Weather: The RQYS Weather Station can be found at:  
<https://www.rqys.com.au/weather-station/>  
The Weather Station records from above the club Bay Lookout.
- BOM: Radar: <http://www.bom.gov.au/products/IDR663.loop.shtml>  
Marine Forecast:  
<http://www.bom.gov.au/qld/forecasts/moreton-bay.shtml>
- Other Popular forecasts:
- Predict Wind: <https://forecast.predictwind.com/table/>  
Seabreeze: <https://www.seabreeze.com.au/weather/wind-forecast/brisbane>  
WillyWeather: <https://wind.willyweather.com.au/qld/brisbane/brisbane.html>



# SI ATTACHMENT A





## SI ATTACHMENT B

Course: Windward / Leeward		
CODE	COURSE	MARKS DESCRIPTION
LA1	Start – 1 – 1a – 4p – Finish	<b>Marks 1:</b> Green Inflatable
LA2	Start – 1 – 1a – 4s/4p – 1 – 1a – 4p – Finish	<b>Mark 2 &amp; 4s/4p:</b> Orange Inflatables
LA3	Start – 1 – 1a – 4s/4p – 1 – 1a – 4s/4p – 1 – 1a – 4p – Finish	<b>Start Pin &amp; 1a:</b> Orange Teardrop
L1	Start – 2 – 4p – Finish	<b>Finish Pin:</b> White Inflatable
L2	Start – 2 – 4s/4p – 2 – 4p – Finish	<b>Change Mark:</b> <b>Mark 1:</b> Yellow Inflatable <b>Mark 2:</b> Purple Inflatable
L3	Start – 2 – 4s/4p – 2 – 4s/4p – 2 – 4p – Finish	

