



Schools Fleet Racing

Term 4 2023

08 – 29 October 2023 (4 Weeks)

SAILING INSTRUCTIONS

(SI)

Organising Authority
ROYAL QUEENSLAND YACHT SQUADRON LTD
578 Royal Esplanade, Manly, QLD 4179

The notation '[NP]' in a rule of the sailing instructions (SIs) means that a boat may not protest another boat for breaking that rule. This changes RRS 60.1(a).

The notation "[DP]" in a rule means that the penalty for a breach of the rule may, at the discretion of the protest committee be less than disqualification.

1. RULES

- 1.1. The event is governed by the rules as defined in The Racing Rules of Sailing.
- 1.2. The prescriptions and special regulations of Australian Sailing (AS) Part 2 will apply ([See Here](#))
- 1.3. Appendix T (Arbitration) shall apply.
- 1.4. Appendix P2.2 is amended as follows: When a boat is penalized more than once during the regatta, she shall promptly retire from each race in which she has been penalized. If she fails to do so she shall be disqualified without a hearing and her score shall not be excluded.
- 1.5. Appendix P2.3 is deleted.
- 1.6. Competitors must follow Club Policies (<https://www.rqys.com.au/policiesanddocuments/>)

2. CHANGES TO SAILING INSTRUCTIONS

- 2.1. Any change to the sailing instructions will be posted before 0900 on the day it will take effect, except that any change to the schedule of races will be posted by 2000 on the day before it will take effect.
- 2.2. Changes to the SIs may be made on the water by flying Code flag L and displaying the change on a board on the Race Committee (RC) Signal Vessel.

3. COMMUNICATIONS WITH COMPETITORS

- 3.1. Notices to competitors will be posted on the official notice board located at <https://www.rqys.com.au/sailingnoticeboard/> .
- 3.2. The race office is located at The RQYS Sailing Office located adjacent to the Main Rigging Lawn, telephone 3396 8666, email sailing@rqys.com.au .
- 3.3. [DP] While racing, except in an emergency, a boat shall not make voice or data transmissions and shall not receive voice or data communication that is not available to all boats.

4. CODE OF CONDUCT

- 4.1 [DP] Competitors and support persons shall comply with reasonable requests from race officials.
- 4.2 [DP] Competitors and support persons shall handle any equipment by the organizing authority with care, seamanship, in accordance with any instructions for its use and without interfering with its functionality.

5. SIGNALS MADE ASHORE

- 5.1. Signals made ashore will be displayed at the official flag pole located at the top of the Eastern Gangway of the Bill Kirby Docks.
- 5.2. When flag AP is displayed ashore, '1 minute' is replaced with 'not less than 45 minutes' in Race Signals AP.

6. SCHEDULE OF RACES

6.1.

DATE	EVENT	TIME
Schools Fleet Racing		
Sunday 08, 15 & 22 October 2023	Briefing on the Rigging Lawn	8:30 hrs
	First Warning Signal (5 Races max)	9:45 hrs
Sunday 29 October 2023	Briefing on the Rigging Lawn	8:30 hrs
	First Warning Signal (5 Races max)	9:45 hrs
	Presentation on the Rigging Lawn	After Racing

6.2. A Maximum of 20 races are scheduled for the regatta.

6.3. On the last scheduled day of racing no warning signal will be made after 1500 hrs.

6.4. The Race Officer may elect to come in for a break and will notify sailors by displaying code flag L Flag.

6.5. To alert boats that a race or sequence of races shall begin soon, the orange starting line flag shall be displayed at least five (5) minutes before a warning signal is made.

7. CLASS FLAGS

7.1. The class flag will be the Pacer Class flag.

8. RACING AREA

8.1. SI Attachment A shows the location of the racing area.

9. COURSES

9.1. The diagram in SI Attachment B shows the course, including the approximate angles between legs, the order in which marks are to be passed, and the side on which each mark is to be left.

9.2. No later than the warning signal, the race committee signal vessel will display the course to be sailed and the approximate compass bearing of the first leg.

10. MARKS

10.1. Marks are as described in SI Attachment B.

11. THE START

11.1. Races will be started using RRS 26 with the warning signal made 5 minutes before the starting signal.

11.2. The starting line is between a staff displaying an orange flag on the signal vessel at the starboard end and the course side of the port-end starting mark.

11.3. A boat that does not start within 5 minutes after her starting signal will be scored Did Not Start without a hearing. This changes RRS A5.1 and A5.2.

12. CHANGE OF THE NEXT LEG OF THE COURSE

12.1. To change the next leg of the course, the race committee will move the original mark or the finishing line to a new position.

13. THE FINISH

13.1. The finishing line is between a staff displaying a blue flag on the finishing vessel at the Port end and the course side of the Starboard end finishing mark.

14. TIME LIMITS [AND TARGET TIMES]

- 14.1. The Mark 1 Time Limit, Race Time Limit (see RRS 35), and the Finishing Window are shown in the table below.

Mark 1 Time Limit	Race Time Limit	Finishing Window
20 minutes	40 minutes	15 minutes

- 14.2. If no boat has passed the first mark within the Mark 1 Time Limit, the race will be abandoned.
- 14.3. The Finishing Window is the time for boats to finish after the first boat sails the course and finishes. Boats failing to finish within the Finishing Window, and not subsequently retiring, penalized or given redress, will be scored Time Limit Expired (TLE) without a hearing. A boat scored TLE shall be scored points for the finishing place one more than the points scored by the last boat that finished within the Finishing Window. This changes RRS 35, A5.1, A5.2 and A10.
- 14.4. Failure to meet the Target Time will not be grounds for redress. This changes RRS 62.1(a).

15. HEARING REQUESTS

- 15.1. Appendix T (Arbitration) shall apply.
- 15.2. The protest time limit is 60 minutes after the last boat finishes the last race of the day or the race committee signals no more racing today, whichever is later. The time will be posted on the official notice board.
- 15.3. Hearing request forms are available from the race office at <https://www.rqys.com.au/regatta-club-racing-documents-auditors/> or by request from the Sailing Office.
- 15.4. Notices will be posted no later than 30 minutes after the protest time limit to inform competitors of hearings in which they are parties or named as witnesses. Hearings shall be held in the specified protest room, beginning at the time posted.
- 15.5. Notices of protests by the Race Committee or Protest Committee shall be posted to inform boats under RRS 61.1(b).

16. SCORING

- 16.1. The series shall be scored according to RRS Appendix A - Low Point System.
- 16.2. Four (4) races must be completed to constitute a series.
- 16.3. When fewer than five (5) races have been completed, a boat's series score shall be the total of her race scores.
- 16.4. When from five (5) to seven (7) races have been completed, a boat's series score shall be the total of her race scores, excluding her worst score.
- 16.5. When from eight (8) or more races have been completed, a boat's series score shall be the total of her race scores, excluding her worst two (2) scores.
- 16.6. Results are tracked to a skippers sail number.
- 16.6.1. Skippers must confirm their sail number on the sign on sheet for every day of racing. Failure to comply shall result in the boat being score DNC without a hearing for the first race on that day. This changes RRS 63.1, A4 and A5.
- 16.6.2 Skippers intending to sail under a different sail number to that on the sign on sheet must fill out a Change of Details form & hand in to the Sailing Office prior to the first warning.

17. SAFETY REGULATIONS [DP] [NP]

- 17.1. Competitors shall SIGN ON before leaving shore and SIGN OFF upon returning to shore, before the end of protest time.
- 17.2. Failure to SIGN ON shall result in the competitor receiving a Sign On/Off Penalty (SOP) of two (2) points for the first race of the day, but not worse than a DNF score.
- 17.3. Failure to SIGN OFF shall result in the competitor receiving a Sign On/Off Penalty (SOP) of two (2) points for the last race of the day, but not worse than a DNF score.
- 17.4. Competitors shall comply with the following requirements within and in the vicinity of Manly Boat Harbour:
 - 17.4.1. All boats shall keep to the right side of the channel when entering and exiting Manly Harbour.
 - 17.4.2. Once outside the Manly Boat Harbour, competitors are to, as soon as possible, stay outside of the main channel, keeping clear of powered vessels.
- 17.5. Competitors shall wear personal flotation devices at all times whilst afloat.
- 17.6. A boat that retires from racing shall notify the Race Committee before leaving the racing area or if that is not possible, shall notify the Race Office and SIGN OFF as soon as possible after returning ashore.

18. REPLACEMENT OF CREW OR EQUIPMENT

- 18.1. Skippers intending to race with a sail number or crew other than stipulated on their entry shall complete the Change of details form and lodge with the Sailing Office prior to racing. Skippers must also sign-on for the day with the correct sail number and crew. Failure to comply may result in the skipper being scored DNC without a hearing for all races on that day. This changes RRS 63.1, A4 and A5.
- 18.2. [DP] Substitution of damaged or lost equipment is not allowed unless authorized in writing by the Race Committee. Requests for substitution shall be made to the committee at the first reasonable opportunity, which may be after the race.

19. EQUIPMENT AND MEASUREMENT CHECKS

- 19.1. A boat or equipment may be inspected at any time for compliance with the class rules, notice of race and sailing instructions.
- 19.2. [DP] When instructed by a race official on the water, a boat shall proceed to a designated area for inspection.

20. OFFICIAL VESSELS

- 20.1. Official vessels will be identified by displaying a white flag or sticker with black letters 'RC' or 'J' or white flag with red letters 'MEDIA'.

21. [DP][DP] SUPPORT TEAMS

- 21.1. Team leaders, coaches and other support persons shall stay outside areas where boats are racing from the time of the preparatory signal for the first start until all boats have finished or retired or the race committee signals a postponement, general recall or abandonment.
- 21.2. If code flag "V" is flying from the committee boat, all Patrol and Support boats are to follow the requests of the Race Committee for their course on VHF Channel 77 (as per RRS 37).
- 21.3. Speed around the course shall be kept to a minimum with the boats engine to be in NEUTRAL & TURNED OFF when around sailors/people in the water.
- 21.4. Maximum speed whilst in the Harbour shall be 6 knots except in emergency situations.
- 21.5. In the case of a medical emergency, the vessel offering the First Aid, shall report the details to the Sailing Office on VHF Channel 77 "RQ77" and proceed to the "Fuel Pontoon" where RQYS Staff shall be on hand to assist.

22. TRASH DISPOSAL

- 22.1. Trash may be placed aboard official or support person vessels.

23. BERTHING

- 23.1. [DP][NP] The Organising Authority may restrict areas of which vessels may rig/de-rig and launch.

24. PRIZES

- 24.1. Prizes will be given for:

24.1.1. 1st, 2nd & 3rd overall

24.1.2. 1st All Female crew overall.

- 24.2. Other prizes may be awarded at the discretion of the Organising Authority.

25. RISK STATEMENT

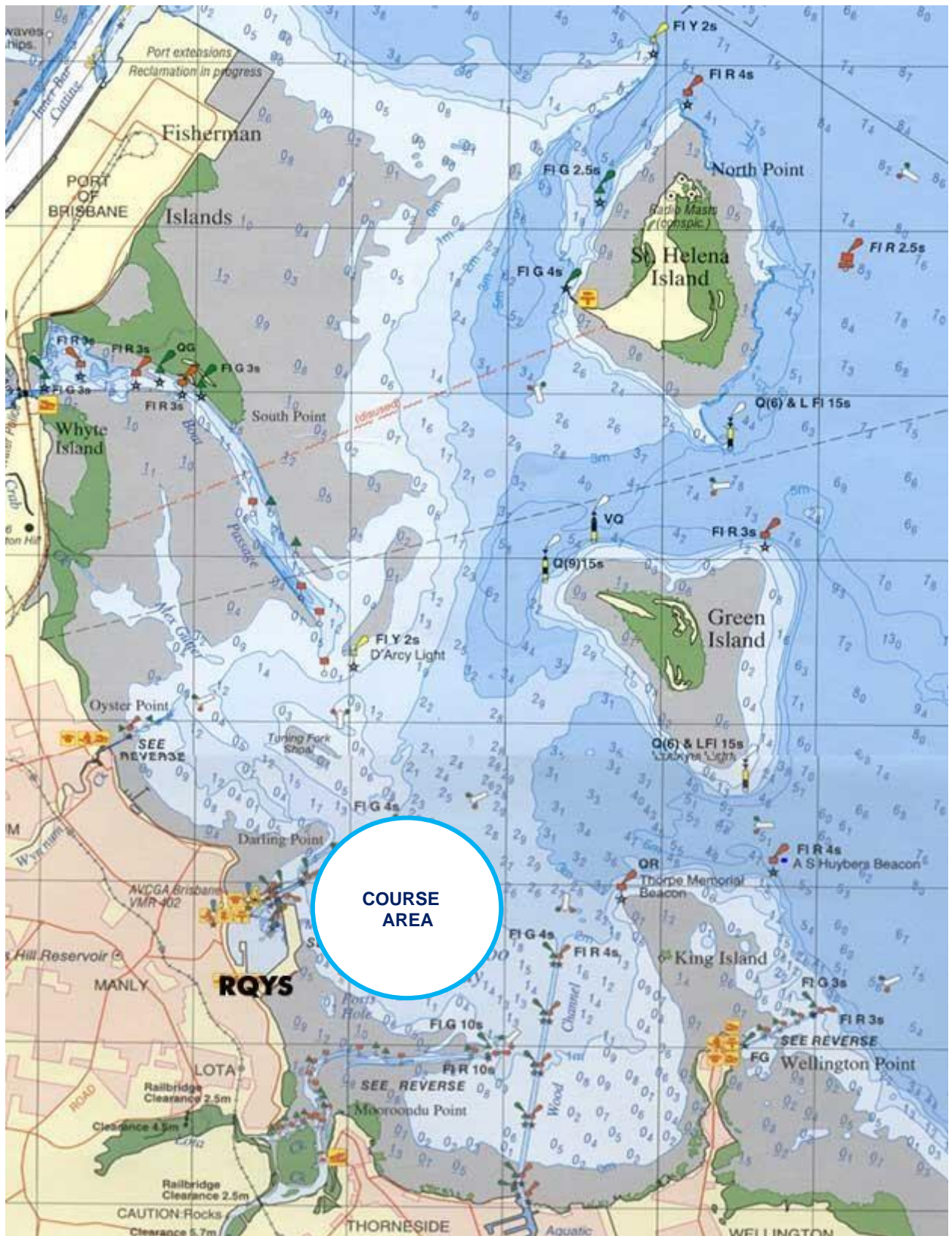
- 25.1. RRS 3 states: 'The responsibility for a boat's decision to participate in a race or to continue to race is hers alone.' By participating in this event each competitor agrees and acknowledges that sailing is a potentially dangerous activity with inherent risks. These risks include strong winds and rough seas, sudden changes in weather, failure of equipment, boat handling errors, poor seamanship by other boats, loss of balance on an unstable platform and fatigue resulting in increased risk of injury. **Inherent in the sport of sailing is the risk of permanent, catastrophic injury or death by drowning, trauma, hypothermia or other causes.**

- 25.2. All participants are required to comply with any safety provisions as mandated under the Racing Rules of Sailing, the Australian Sailing Special Regulations Part 2 for Off The Beach Boats, and any Class Rules that may apply. The Squadron encourages and supports competitors who believe it is appropriate to exceed the above requirements (such as the wearing of helmets, body armor, impact vests, etc.) if they or their guardian believe that conditions and their personal circumstances warrant. All competitor's attention is drawn to the Risk Statement - Section 25 of the Sailing Instructions.

26. INSURANCE

- 26.1. Each participating boat shall be insured with valid third-party liability insurance with a minimum cover of \$10,000,000AUD per incident or the equivalent.

SI ATTACHMENT A



SI ATTACHMENT B

CODE	COURSE	MARKS DESCRIPTION
L1	Start – 1 – Finish	Marks 1: Yellow Inflatable
L2	Start – 1 – 4s/4p – 1 – Finish	Marks 4s & 4p: Purple Inflatables
L3	Start – 1 – 4s/4p – 1 – 4s/4p – 1 – Finish	Start Pin, Finish Pin: Orange Teardrop

